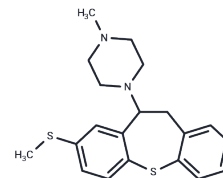


## Methiothepin methanesulfonate

## Chemical Properties

CAS No. :	51482-89-4
Formula:	C <sub>20</sub> H <sub>24</sub> N <sub>2</sub> S <sub>2</sub> .xCH <sub>4</sub> O <sub>3</sub> S
Molecular Weight:	452.65
Storage:	Powder: -20°C for 3 years   In solvent: -80°C for 1 year Actual storage temperature shall be subject to the COA.



## Biological Description

Description	Methiothepin methanesulfonate is an inhibitor of HCV infection and cell-to-cell transmission that acts by targeting the HCV E2 glycoprotein.
Targets(IC50)	Others

## Preparing Stock Solutions

	1mg	5mg	10mg
1 mM	2.2092 mL	11.0461 mL	22.0921 mL
5 mM	0.4418 mL	2.2092 mL	4.4184 mL
10 mM	0.2209 mL	1.1046 mL	2.2092 mL
50 mM	0.0442 mL	0.2209 mL	0.4418 mL

Please select the appropriate solvent to prepare the stock solution, according to the solubility of the product in different solvents. Please use it as soon as possible.

Note: The dilution table applies only to solid products. For liquid products, please calculate the stock solution based on the stated concentration and/or density.

Inhibitor · Natural Compounds · Compound Libraries · Recombinant Proteins

This product is for Research Use Only · Not for Human or Veterinary or Therapeutic Use

Tel: 781-999-4286 E\_mail: info@targetmol.com Address: 34 Washington Street, Wellesley Hills, MA 02481