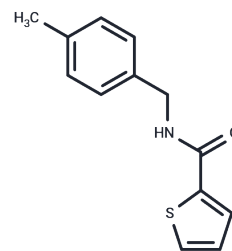


OX3a

Chemical Properties

CAS No. : 329939-05-1
 Formula: C₁₃H₁₃NOS
 Molecular Weight: 231.31
 Storage: Powder: -20°C for 3 years | In solvent: -80°C for 1 year
 Actual storage temperature shall be subject to the COA.



Biological Description

Description	OX3a is an orco antagonist agent that acts by inhibiting odorant activation of insect Ors.
Targets(IC50)	Others

Preparing Stock Solutions

	1mg	5mg	10mg
1 mM	4.3232 mL	21.616 mL	43.232 mL
5 mM	0.8646 mL	4.3232 mL	8.6464 mL
10 mM	0.4323 mL	2.1616 mL	4.3232 mL
50 mM	0.0865 mL	0.4323 mL	0.8646 mL

Please select the appropriate solvent to prepare the stock solution, according to the solubility of the product in different solvents. Please use it as soon as possible.

Note: The dilution table applies only to solid products. For liquid products, please calculate the stock solution based on the stated concentration and/or density.

Reference

- Bertin Y, Boukhors K, Pradel N, Livrelli V, Martin C. Stx2 subtyping of Shiga toxin-producing Escherichia coli isolated from cattle in France: detection of a new Stx2 subtype and correlation with additional virulence factors. J Clin Microbiol. 2001 Sep;39(9):3060-5. PubMed PMID: 11526129; PubMed Central PMCID: PMC88297.
- Ramachandran V, Hornitzky MA, Bettelheim KA, Walker MJ, Djordjevic SP. The common ovine Shiga toxin 2-containing Escherichia coli serotypes and human isolates of the same serotypes possess a Stx2d toxin type. J Clin Microbiol. 2001 May;39(5):1932-7. PubMed PMID: 11326016; PubMed Central PMCID: PMC88051.
- Paton AW, Bourne AJ, Manning PA, Paton JC. Comparative toxicity and virulence of Escherichia coli clones expressing variant and chimeric Shiga-like toxin type II operons. Infect Immun. 1995 Jul;63(7):2450-8. PubMed PMID: 7790056; PubMed Central PMCID: PMC173327.

Inhibitor · Natural Compounds · Compound Libraries · Recombinant Proteins

This product is for Research Use Only · Not for Human or Veterinary or Therapeutic Use

Tel:781-999-4286 E_mail:info@targetmol.com Address:34 Washington Street,Wellesley Hills,MA 02481