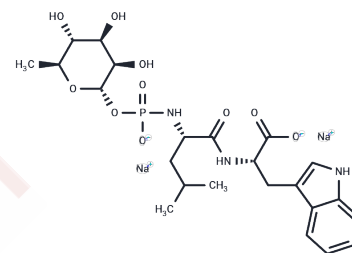


Phosphoramidon Disodium

Chemical Properties

CAS No. :	164204-38-0
Formula:	C ₂₃ H ₃₄ N ₃ Na ₂ O ₁₀ P
Molecular Weight:	588.48
Storage:	Powder: -20°C for 3 years In solvent: -80°C for 1 year Actual storage temperature shall be subject to the COA.



Biological Description

Description	Phosphoramidon Disodium (Phosphoramidon Disodium Salt) Salt is a metalloendopeptidase inhibitor, widely used as a biochemical tool.
Targets(IC50)	RAAS,MMP,Neprilysin,Endogenous Metabolite,Angiotensin-converting Enzyme (ACE)
In vitro	Phosphoramidon is a powerful inhibitor of thermolysin without inhibiting the other endopeptidases such as trypsin, papain, chymotrypsin. [1] Phosphoramidon reduces tumor cell invasion in CC531 cells. [2]
In vivo	In rats bearing colon carcinoma CC531 xenografts, Phosphoramidon (250 mg/Rat i.p.) significantly reduces tumor cell growth. [2] Intranasal phosphoramidon increases beta-amyloid levels in wild-type and NEP/NEP2-deficient mice, and thus can be use to model Alzheimer's disease (AD). [3]

Solubility Information

Solubility	H ₂ O: 169.9 mM,Sonication is recommended. DMSO: 169.9 mM,Sonication is recommended. (< 1 mg/ml refers to the product slightly soluble or insoluble)
In vivo Formulation	10% DMSO+40% PEG300+5% Tween-80+45% Saline: 1 mg/mL (1.7 mM),Sonication is recommended. <i>Please add the solvents sequentially, clarifying the solution as much as possible before adding the next one. Dissolve by heating and/or sonication if necessary. Working solution is recommended to be prepared and used immediately. The formulation provided above is for reference purposes only. In vivo formulations may vary and should be modified based on specific experimental conditions.</i>

Preparing Stock Solutions

	1mg	5mg	10mg
1 mM	1.6993 mL	8.4965 mL	16.9929 mL
5 mM	0.3399 mL	1.6993 mL	3.3986 mL
10 mM	0.1699 mL	0.8496 mL	1.6993 mL
50 mM	0.034 mL	0.1699 mL	0.3399 mL

Please select the appropriate solvent to prepare the stock solution, according to the solubility of the product in different solvents. Please use it as soon as possible.

Note: The dilution table applies only to solid products. For liquid products, please calculate the stock solution based on the stated concentration and/or density.

Reference

Komiyama T, et al. Biochem Biophys Res Commun. 1975, 65(1), 352-357.

Pross M, et al. Surg Endosc. 2001, 15(8), 882-885.

Hanson LR, et al. J Mol Neurosci. 2011, 43(3), 424-427.

Inhibitor · Natural Compounds · Compound Libraries · Recombinant Proteins

This product is for Research Use Only · Not for Human or Veterinary or Therapeutic Use

Tel:781-999-4286 E_mail:info@targetmol.com Address:34 Washington Street,Wellesley Hills,MA 02481