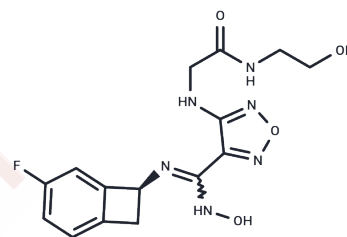


IDO1-IN-2

Chemical Properties

CAS No. :	2346614-58-0
Formula:	C ₁₅ H ₁₇ FN ₆ O ₄
Molecular Weight:	364.33
Storage:	Powder: -20°C for 3 years In solvent: -80°C for 1 year Actual storage temperature shall be subject to the COA.



Biological Description

Description	IDO1-IN-2 is a potent and selective IDO1 inhibitor with IC ₅₀ s of 81 nM, 59 nM (mouse), and 28 nM (rat), respectively. It has anti-cancer activity.
Targets(IC ₅₀)	IDO, Indoleamine 2,3-Dioxygenase (IDO)
In vitro	IDO1-IN-2 has an IC ₅₀ of 249 nM for IDO1 whole blood. IDO1-IN-2 inhibits amino-cyclobutane-derived indoleamine-2,3-dioxygenase 1 (IDO1) Hela cellular with an IC ₅₀ of 49 nM.
In vivo	IDO1-IN-2 exhibits pharmacokinetic properties with a half-life (t _{1/2}) of 3.7 hours, a clearance/bioavailable unbound clearance (CL/CL _u) of 15/319 mL/min/kg, and bioavailability (F) of 63% in rats. In dogs, its half-life extends to 6 hours, with a CL/CL _u of 6/88 mL/min/kg, and a bioavailability of 67%. Furthermore, IDO1-IN-2, administered at a dose of 100 mg/kg twice daily, effectively enhances therapeutic outcomes when used alongside anti-PD-1 monoclonal antibodies (mAb) in a mouse EMT6 tumor syngeneic model, demonstrating significant synergy in efficacy.

Preparing Stock Solutions

	1mg	5mg	10mg
1 mM	2.7448 mL	13.7238 mL	27.4476 mL
5 mM	0.549 mL	2.7448 mL	5.4895 mL
10 mM	0.2745 mL	1.3724 mL	2.7448 mL
50 mM	0.0549 mL	0.2745 mL	0.549 mL

Please select the appropriate solvent to prepare the stock solution, according to the solubility of the product in different solvents. Please use it as soon as possible.

Note: The dilution table applies only to solid products. For liquid products, please calculate the stock solution based on the stated concentration and/or density.

Reference

Zhang H, et al. Discovery of Amino-cyclobutane-derived Indoleamine-2,3-dioxygenase 1 (IDO1) Inhibitors for Cancer Immunotherapy. ACS Med Chem Lett. 2019 Sep 18;10(11):1530-1536.

Inhibitor · Natural Compounds · Compound Libraries · Recombinant Proteins

This product is for Research Use Only · Not for Human or Veterinary or Therapeutic Use

Tel: 781-999-4286 E_mail: info@targetmol.com Address: 34 Washington Street, Wellesley Hills, MA 02481