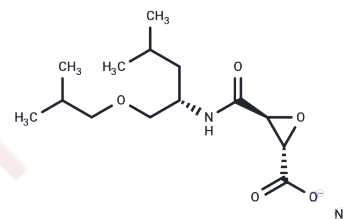


VEL-0230

Chemical Properties

CAS No. : 221144-20-3
 Formula: C₁₄H₂₄NNaO₅
 Molecular Weight: 309.33
 Storage: Powder: -20°C for 3 years | In solvent: -80°C for 1 year
 Actual storage temperature shall be subject to the COA.



Biological Description

Description	VEL-0230, also known as NC-2300, is a potent cathepsin K inhibitor. VEL-0230 has dual-acting properties that both stimulates bone formation and inhibits loss. VEL-0230 is being studied preclinically for the treatment of diseases involving bone mineral disorders such as bone loss related to multiple myeloma, osteoporosis, bone metastases, and rheumatoid arthritis. Velcura Therapeutics is currently being developed by Velcura Therapeutics. Given VEL- 0230's promotion of bone formation, inhibition of bone loss and reduction of calcium levels, Velcura has chosen Myeloma as its lead indication, as the bone fragility, bone pain, high calcium levels and eventual kidney involvement present serious medical and quality of life issues to affected patients.
Targets(IC50)	Others,Cysteine Protease

Preparing Stock Solutions

	1mg	5mg	10mg
1 mM	3.2328 mL	16.164 mL	32.3279 mL
5 mM	0.6466 mL	3.2328 mL	6.4656 mL
10 mM	0.3233 mL	1.6164 mL	3.2328 mL
50 mM	0.0647 mL	0.3233 mL	0.6466 mL

Please select the appropriate solvent to prepare the stock solution, according to the solubility of the product in different solvents. Please use it as soon as possible.

Note: The dilution table applies only to solid products. For liquid products, please calculate the stock solution based on the stated concentration and/or density.

Inhibitor · Natural Compounds · Compound Libraries · Recombinant Proteins

This product is for Research Use Only· Not for Human or Veterinary or Therapeutic Use

Tel:781-999-4286 E_mail:info@targetmol.com Address:34 Washington Street,Wellesley Hills,MA 02481