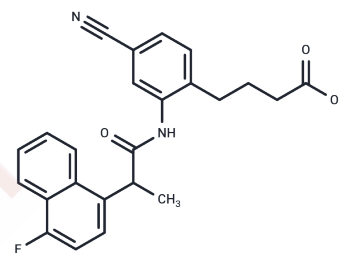


## ONO-AE3-208

## Chemical Properties

CAS No. :	402473-54-5
Formula:	C <sub>24</sub> H <sub>21</sub> FN <sub>2</sub> O <sub>3</sub>
Molecular Weight:	404.43
Storage:	Powder: -20°C for 3 years   In solvent: -80°C for 1 year Actual storage temperature shall be subject to the COA.



## Biological Description

Description	ONO-AE3-208 (AE 3-208) is an EP4 antagonist. It suppresses cell migration, invasion, and metastasis of prostate cancer.
Targets(IC50)	Prostaglandin Receptor
In vitro	ONO-AE3-208 abolishes CTGF in the presence of the EET synthesis inhibitor MS-PPOH. Arachidonic acid causes the dose-dependent dilation of the attached Af-Art, and this effect is blocked by ONO-AE3-208 [2].
In vivo	In mice, ONO-AE3-208 significantly reduces bone metastasis of PC3 cells in vivo, as evidenced by reduced photon tumor burdens over time when compared to the control group. Additionally, the rate of metastasis is significantly lower in the ONO-AE3-208-treated group, with a median metastasis formation time of 29 days, compared to 21 days in the control group.

## Solubility Information

Solubility	H <sub>2</sub> O: Insoluble, DMSO: 70 mg/mL (173.08 mM), Sonication is recommended. (< 1 mg/ml refers to the product slightly soluble or insoluble)
In vivo Formulation	10% DMSO+40% PEG300+5% Tween 80+45% Saline: 2 mg/mL (4.95 mM), Sonication is recommended. <i>Please add the solvents sequentially, clarifying the solution as much as possible before adding the next one. Dissolve by heating and/or sonication if necessary. Working solution is recommended to be prepared and used immediately. The formulation provided above is for reference purposes only. In vivo formulations may vary and should be modified based on specific experimental conditions.</i>

### Preparing Stock Solutions

---

	1mg	5mg	10mg
1 mM	2.4726 mL	12.3631 mL	24.7262 mL
5 mM	0.4945 mL	2.4726 mL	4.9452 mL
10 mM	0.2473 mL	1.2363 mL	2.4726 mL
50 mM	0.0495 mL	0.2473 mL	0.4945 mL

---

Please select the appropriate solvent to prepare the stock solution, according to the solubility of the product in different solvents. Please use it as soon as possible.

Note: The dilution table applies only to solid products. For liquid products, please calculate the stock solution based on the stated concentration and/or density.

### Reference

- Xu S, et al. An EP4 Antagonist ONO-AE3-208 Suppresses Cell Invasion, Migration, and Metastasis of Prostate Cancer. *Cell Biochem Biophys*. 2014 Apr 18.
- Xiang X, Wang K, Zhang H, et al. Blocking CX3CR1+ Tumor-associated Macrophages Enhances the Efficacy of Anti-PD-1 Therapy in Hepatocellular Carcinoma. *Cancer Immunology Research*. 2024
- Ren Y, et al. Prostaglandin E2 mediates connecting tubule glomerular feedback. *Hypertension*. 2013 Dec;62(6): 1123-8.
- Xu S, et al. Inhibitory effect of ONO-AE3-208 on the formation of bone metastasis of prostate cancer in mice. *Zhonghua Nan Ke Xue*. 2014 Aug;20(8):684-9.

**Inhibitor · Natural Compounds · Compound Libraries · Recombinant Proteins**

This product is for Research Use Only · Not for Human or Veterinary or Therapeutic Use

Tel: 781-999-4286 E\_mail: info@targetmol.com Address: 34 Washington Street, Wellesley Hills, MA 02481