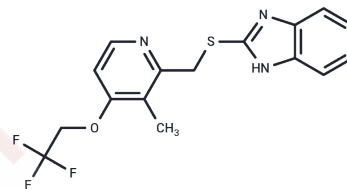


Lansoprazole sulfide

Chemical Properties

CAS No. :	103577-40-8
Formula:	C ₁₆ H ₁₄ F ₃ N ₃ O ₅
Molecular Weight:	353.36
Storage:	Store at low temperature Powder: -20°C for 3 years In solvent: -80°C for 1 year <small>Actual storage temperature shall be subject to the COA.</small>



Biological Description

Description	Lansoprazole sulfide (AG-177) is an active metabolite of Lansoprazole with similar activity. Lansoprazole is a proton pump inhibitor and antitubercular agent with an IC ₅₀ = 0.59 μM against Mycobacterium tuberculosis.
Targets(IC50)	Antibacterial, Drug Metabolite
In vitro	Lansoprazole sulfide exhibits anti-tuberculosis activity, showing an IC ₅₀ of 0.59 μM against Mycobacterium tuberculosis[1].

Solubility Information

Solubility	DMSO: 2 mg/mL (5.66 mM), Sonication is recommended. (< 1 mg/ml refers to the product slightly soluble or insoluble)
------------	--

Preparing Stock Solutions

	1mg	5mg	10mg
1 mM	2.830 mL	14.1499 mL	28.2998 mL
5 mM	0.566 mL	2.830 mL	5.660 mL
10 mM	0.283 mL	1.415 mL	2.830 mL
50 mM	0.0566 mL	0.283 mL	0.566 mL

Please select the appropriate solvent to prepare the stock solution, according to the solubility of the product in different solvents. Please use it as soon as possible.

Note: The dilution table applies only to solid products. For liquid products, please calculate the stock solution based on the stated concentration and/or density.

Reference

Beebe J, et al. Therapeutic Activity of the Lansoprazole Metabolite 5-Hydroxy Lansoprazole Sulfide in Triple-Negative Breast Cancer by Inhibiting the Enoyl Reductase of Fatty Acid Synthase. *J Med Chem*. 2022 Oct 27;65(20):13681-13691.

Rybniker J, Vocat A, Sala C, Busso P, Pojer F, Benjak A, Cole ST. Lansoprazole is an antituberculous prodrug targeting cytochrome bc1. *Nat Commun*. 2015 Jul 9;6:7659.

Pearce RE, Rodrigues AD, Goldstein JA, Parkinson A. Identification of the human P450 enzymes involved in lansoprazole metabolism. *J Pharmacol Exp Ther*. 1996 May;277(2):805-16. PubMed PMID: 8627562.

Landes BD, Petite JP, Flouvat B. Clinical pharmacokinetics of lansoprazole. *Clin Pharmacokinet*. 1995 Jun;28(6):458-70. Review. PubMed PMID: 7656504.

Inhibitor · Natural Compounds · Compound Libraries · Recombinant Proteins

This product is for Research Use Only · Not for Human or Veterinary or Therapeutic Use

Tel:781-999-4286 E_mail:info@targetmol.com Address:34 Washington Street,Wellesley Hills,MA 02481