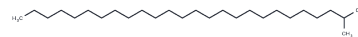


2-Methylhexacosane

Chemical Properties

CAS No. :	1561-02-0
Formula:	C ₂₇ H ₅₆
Molecular Weight:	380.73
Storage:	Powder: -20°C for 3 years In solvent: -80°C for 1 year Actual storage temperature shall be subject to the COA.



Biological Description

Description	2-Methylhexacosane is a saturated hydrocarbon and an insect pheromone. It has been found in the cuticle of <i>M. dasystomus</i> females, but not males, contributing to the mating behavior of males, as well as in <i>D. melanogaster</i> females where it modulates male aggression. 2-Methylhexacosane has also been found in yellow jacket (<i>V. vulgaris</i>) trail extracts.
Targets(IC50)	Others

Solubility Information

Solubility	Chloroform: Soluble Hexane: Soluble (< 1 mg/ml refers to the product slightly soluble or insoluble)
------------	--

Preparing Stock Solutions

	1mg	5mg	10mg
1 mM	2.6265 mL	13.1327 mL	26.2653 mL
5 mM	0.5253 mL	2.6265 mL	5.2531 mL
10 mM	0.2627 mL	1.3133 mL	2.6265 mL
50 mM	0.0525 mL	0.2627 mL	0.5253 mL

Please select the appropriate solvent to prepare the stock solution, according to the solubility of the product in different solvents. Please use it as soon as possible.

Note: The dilution table applies only to solid products. For liquid products, please calculate the stock solution based on the stated concentration and/or density.

Reference

Spikes, A.E., Pashen, M.A., Millar, J.G., et al. First contact pheromone identified for a longhorned beetle (Coleoptera: Cerambycidae) in the subfamily Prioninae. *Chem. Ecol.* 36(9)943-954(2010)

Fernández, d.L.P., Chan, Y.-B., Yew, J.Y., et al. Pheromonal and behavioral cues trigger male-to-female aggression in *Drosophila*. *PLoS Biol.* 8(11)e1000541(2010)

Steinmetz, I., Schmolz, E., and Ruther, J. Cuticular lipids as trail pheromone in a social wasp. *Proc. Biol. Sci.* 270(1513) 385-391(2003)

Inhibitor · Natural Compounds · Compound Libraries · Recombinant Proteins

This product is for Research Use Only · Not for Human or Veterinary or Therapeutic Use

Tel: 781-999-4286 E_mail: info@targetmol.com Address: 34 Washington Street, Wellesley Hills, MA 02481