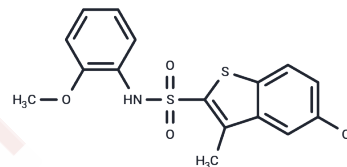


DSS30

Chemical Properties

CAS No. : 883027-32-5
 Formula: C₁₆H₁₄ClNO₃S₂
 Molecular Weight: 367.87
 Storage: Powder: -20°C for 3 years | In solvent: -80°C for 1 year
 Actual storage temperature shall be subject to the COA.



Biological Description

| | |
|---------------|---|
| Description | DSS30 is a P25/CDK5 inhibitor. DSS30 acts by inhibiting the phosphorylation of amyloid precursor protein cleaving enzyme 1 (BACE1), which reduces the secretion of β -amyloid (A β). DSS30 can be used for the prevention and treatment of neurodegenerative diseases such as Alzheimer's disease. |
| Targets(IC50) | Beta Amyloid, BACE, CDK |
| In vitro | DSS30 (50 μ M, 2 h) demonstrates a maximum 50% inhibition in the P25/CDK5 complex activity, along with a reduction in the phosphorylation levels of BACE1 or Tau.[1] |

Solubility Information

| | |
|------------|--|
| Solubility | DMSO: 10 mg/mL (27.18 mM), Sonication is recommended. (< 1 mg/ml refers to the product slightly soluble or insoluble) |
|------------|--|

Preparing Stock Solutions

| | 1mg | 5mg | 10mg |
|-------|-----------|------------|------------|
| 1 mM | 2.7184 mL | 13.5918 mL | 27.1835 mL |
| 5 mM | 0.5437 mL | 2.7184 mL | 5.4367 mL |
| 10 mM | 0.2718 mL | 1.3592 mL | 2.7184 mL |
| 50 mM | 0.0544 mL | 0.2718 mL | 0.5437 mL |

Please select the appropriate solvent to prepare the stock solution, according to the solubility of the product in different solvents. Please use it as soon as possible.

Note: The dilution table applies only to solid products. For liquid products, please calculate the stock solution based on the stated concentration and/or density.

Reference

Sul-Hee Chung, et al. Pharmaceutical composition comprising a p25/cdk5 inhibitor for preventing or treating a neurodegenerative disease. WO2006075808.

Inhibitor · Natural Compounds · Compound Libraries · Recombinant Proteins

This product is for Research Use Only · Not for Human or Veterinary or Therapeutic Use

Tel:781-999-4286 E_mail:info@targetmol.com Address:34 Washington Street,Wellesley Hills,MA 02481