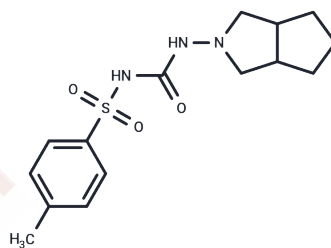


Gliclazide

Chemical Properties

CAS No. :	21187-98-4
Formula:	C ₁₅ H ₂₁ N ₃ O ₃ S
Molecular Weight:	323.41
Storage:	Powder: -20°C for 3 years In solvent: -80°C for 1 year Actual storage temperature shall be subject to the COA.



Biological Description

Description	Gliclazide (SE1702), an oral antihyperglycemic agent, belongs to the sulfonylurea class of insulin secretagogues, which act by stimulating beta-cells of the pancreas to release insulin.
Targets(IC50)	Potassium Channel

Solubility Information

Solubility	Ethanol: < 1 mg/mL (insoluble or slightly soluble), H ₂ O: < 1 mg/mL (insoluble or slightly soluble), DMSO: 250 mg/mL (773.01 mM), Sonication is recommended. (< 1 mg/ml refers to the product slightly soluble or insoluble)
In vivo Formulation	10% DMSO+40% PEG300+5% Tween 80+45% Saline: 2 mg/mL (6.18 mM), Sonication is recommended. <i>Please add the solvents sequentially, clarifying the solution as much as possible before adding the next one. Dissolve by heating and/or sonication if necessary. Working solution is recommended to be prepared and used immediately. The formulation provided above is for reference purposes only. In vivo formulations may vary and should be modified based on specific experimental conditions.</i>

Preparing Stock Solutions

	1mg	5mg	10mg
1 mM	3.0921 mL	15.4603 mL	30.9205 mL
5 mM	0.6184 mL	3.0921 mL	6.1841 mL
10 mM	0.3092 mL	1.546 mL	3.0921 mL
50 mM	0.0618 mL	0.3092 mL	0.6184 mL

Please select the appropriate solvent to prepare the stock solution, according to the solubility of the product in different solvents. Please use it as soon as possible.

Note: The dilution table applies only to solid products. For liquid products, please calculate the stock solution based on the stated concentration and/or density.

Reference

Mamputu JC, Renier G. J Diabetes Complications. 2002 Jul-Aug;16(4):284-93.

Inhibitor · Natural Compounds · Compound Libraries · Recombinant Proteins

This product is for Research Use Only · Not for Human or Veterinary or Therapeutic Use

Tel:781-999-4286 E_mail:info@targetmol.com Address:34 Washington Street,Wellesley Hills,MA 02481