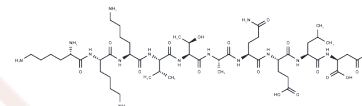


SEB Domain (144-153)

Chemical Properties

CAS No. :	210229-94-0
Formula:	C50H90N14O17
Molecular Weight:	1159.33
Storage:	Keep away from moisture Powder: -20°C for 3 years In solvent: -80°C for 1 year <small>Actual storage temperature shall be subject to the COA.</small>



Biological Description

Description	SEB Domain (144-153) peptide is Staphylococcal Enterotoxin B domain amino acid residue 163-172. SEB Domain (144-153) has been shown to inhibit transcytosis of multiple staphylococcal enterotoxins, SEA, SEE, and TSST-1.
Targets(IC50)	Antibacterial

Solubility Information

Solubility	H2O: Soluble, (< 1 mg/ml refers to the product slightly soluble or insoluble)
------------	---

Preparing Stock Solutions

	1mg	5mg	10mg
1 mM	0.8626 mL	4.3128 mL	8.6257 mL
5 mM	0.1725 mL	0.8626 mL	1.7251 mL
10 mM	0.0863 mL	0.4313 mL	0.8626 mL
50 mM	0.0173 mL	0.0863 mL	0.1725 mL

Please select the appropriate solvent to prepare the stock solution, according to the solubility of the product in different solvents. Please use it as soon as possible.

Note: The dilution table applies only to solid products. For liquid products, please calculate the stock solution based on the stated concentration and/or density.

Reference

Rödström KE, et al. Structure of the superantigen staphylococcal enterotoxin B in complex with TCR and peptide-MHC demonstrates absence of TCR-peptide contacts. *J Immunol.* 2014 Aug 15;193(4):1998-2004.

Inhibitor · Natural Compounds · Compound Libraries · Recombinant Proteins

This product is for Research Use Only · Not for Human or Veterinary or Therapeutic Use

Tel:781-999-4286 E_mail:info@targetmol.com Address:34 Washington Street,Wellesley Hills,MA 02481