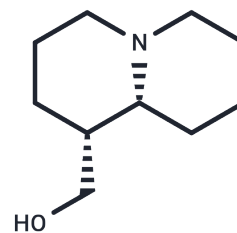


Lupinine

Chemical Properties

CAS No. :	486-70-4
Formula:	C ₁₀ H ₁₉ NO
Molecular Weight:	169.26
Storage:	Powder: -20°C for 3 years In solvent: -80°C for 1 year Actual storage temperature shall be subject to the COA.



Biological Description

Description	Lupinine is an alkaloid capable of counteracting ethanol anesthesia. Lupinine is an AChE and BChE inhibitor and potential CD69 activator found in species of <i>Loranthus</i> , <i>Calia</i> , and <i>Lupinus</i> . It may also inhibit heparin.
Targets(IC50)	Others,AChR,Cholinesterase (ChE)

Solubility Information

Solubility	DMSO: 22.5 mg/mL (132.93 mM),Sonication is recommended. (< 1 mg/ml refers to the product slightly soluble or insoluble)
In vivo Formulation	10% DMSO+40% PEG300+5% Tween 80+45% Saline: 2 mg/mL (11.82 mM),Sonication is recommended. <i>Please add the solvents sequentially, clarifying the solution as much as possible before adding the next one. Dissolve by heating and/or sonication if necessary. Working solution is recommended to be prepared and used immediately. The formulation provided above is for reference purposes only. In vivo formulations may vary and should be modified based on specific experimental conditions.</i>

Preparing Stock Solutions

	1mg	5mg	10mg
1 mM	5.9081 mL	29.5404 mL	59.0807 mL
5 mM	1.1816 mL	5.9081 mL	11.8161 mL
10 mM	0.5908 mL	2.954 mL	5.9081 mL
50 mM	0.1182 mL	0.5908 mL	1.1816 mL

Please select the appropriate solvent to prepare the stock solution, according to the solubility of the product in different solvents. Please use it as soon as possible.

Note: The dilution table applies only to solid products. For liquid products, please calculate the stock solution based on the stated concentration and/or density.

Reference

Rozengart E V . Bisalkaloid Derivatives of Dicarboxylic Acids on the Basis of Lupinine, Anabasine, and Cytisine as Reversible Cholinesterase Inhibitors[J]. Doklady Biochemistry & Biophysics, 2003, 388(1-6):39-42.

Inhibitor · Natural Compounds · Compound Libraries · Recombinant Proteins

This product is for Research Use Only· Not for Human or Veterinary or Therapeutic Use

Tel:781-999-4286 E_mail:info@targetmol.com Address:34 Washington Street,Wellesley Hills,MA 02481