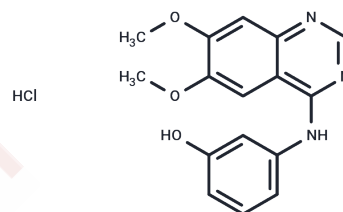


WHI-P180 hydrochloride

Chemical Properties

| | |
|-------------------|---|
| CAS No. : | 153437-55-9 |
| Formula: | C ₁₆ H ₁₆ ClN ₃ O ₃ |
| Molecular Weight: | 333.77 |
| Storage: | Powder: -20°C for 3 years In solvent: -80°C for 1 year Actual storage temperature shall be subject to the COA. |



Biological Description

| | |
|----------------------------|--|
| Description | WHI-P180 (Janex 3) inhibits RET, KDR and EGFR with IC ₅₀ values of 5 nM, 66 nM and 4 μM, respectively. WHI-P180 is a multi-kinase inhibitor. |
| Targets(IC ₅₀) | EGFR,Others,c-RET,VEGFR |
| In vivo | WHI-P180 acts as an effective inhibitor of IgE-mediated mast cell responses. In CD-1 (BALB/c) mice, its elimination half-life is below 10 minutes across intravenous (i.v.), intraperitoneal (i.p.), and oral (p.o.) administrations. Systemic clearance rates for WHI-P180 are recorded at 6742 mL/h/kg in CD-1 mice and 8188 mL/h/kg in BALB/c mice. Importantly, administering two consecutive, non-toxic i.p. bolus doses of 25 mg/kg of WHI-P180 suppresses IgE/antigen-induced vascular hyperpermeability in a validated mouse model of passive cutaneous anaphylaxis. |

Preparing Stock Solutions

| | 1mg | 5mg | 10mg |
|-------|-----------|------------|------------|
| 1 mM | 2.9961 mL | 14.9804 mL | 29.9608 mL |
| 5 mM | 0.5992 mL | 2.9961 mL | 5.9922 mL |
| 10 mM | 0.2996 mL | 1.498 mL | 2.9961 mL |
| 50 mM | 0.0599 mL | 0.2996 mL | 0.5992 mL |

Please select the appropriate solvent to prepare the stock solution, according to the solubility of the product in different solvents. Please use it as soon as possible.

Note: The dilution table applies only to solid products. For liquid products, please calculate the stock solution based on the stated concentration and/or density.

Inhibitor · Natural Compounds · Compound Libraries · Recombinant Proteins

This product is for Research Use Only · Not for Human or Veterinary or Therapeutic Use

Tel:781-999-4286 E_mail:info@targetmol.com Address:34 Washington Street,Wellesley Hills,MA 02481