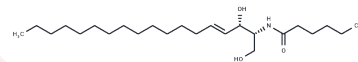


## C6 L-erythro Ceramide (d18:1/6:0)

## Chemical Properties

CAS No. :	189894-78-8
Formula:	C24H47NO3
Molecular Weight:	397.644
Storage:	Powder: -20°C for 3 years   In solvent: -80°C for 1 year Actual storage temperature shall be subject to the COA.



## Biological Description

Description	C6 L-erythro Ceramide is a bioactive sphingolipid and cell-permeable analog of naturally occurring ceramides. It is metabolized by ceramide glucosyltransferase to form C6 L-erythro glucosylceramide. C6 L-erythro Ceramide is cytotoxic to U937 cells (IC50 = 18 µM).
Targets(IC50)	Others

## Solubility Information

Solubility	Ethanol: Soluble Chloroform: Soluble DMF: 5 mg/mL (12.57 mM), Sonication is recommended. DMSO: Soluble (< 1 mg/ml refers to the product slightly soluble or insoluble)
------------	--

## Preparing Stock Solutions

	1mg	5mg	10mg
1 mM	2.5148 mL	12.5742 mL	25.1484 mL
5 mM	0.503 mL	2.5148 mL	5.0297 mL
10 mM	0.2515 mL	1.2574 mL	2.5148 mL
50 mM	0.0503 mL	0.2515 mL	0.503 mL

Please select the appropriate solvent to prepare the stock solution, according to the solubility of the product in different solvents. Please use it as soon as possible.

Note: The dilution table applies only to solid products. For liquid products, please calculate the stock solution based on the stated concentration and/or density.

**Inhibitor · Natural Compounds · Compound Libraries · Recombinant Proteins**

This product is for Research Use Only · Not for Human or Veterinary or Therapeutic Use

Tel:781-999-4286 E\_mail:info@targetmol.com Address:34 Washington Street,Wellesley Hills,MA 02481