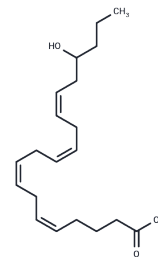


(±)17-HETE**Chemical Properties**

CAS No. :	128914-47-6
Formula:	C ₂₀ H ₃₂ O ₃
Molecular Weight:	320.473
Storage:	Powder: -20°C for 3 years In solvent: -80°C for 1 year Actual storage temperature shall be subject to the COA.

**Biological Description**

Description	Electrolyte and fluid transport in the kidney are regulated in part by arachidonic acid and its metabolites. (±)17-HETE is the racemic version of a cytochrome P450 (CYP450) metabolite of arachidonic acid that has stereospecific effects on sodium transport in the kidney. At a concentration of 2 μM the (S)-enantiomer of 17-HETE inhibits proximal tubule ATPase activity by as much as 70%, whereas the (R)-isomer is inactive.
Targets(IC50)	ATPase,Others,Cytochromes P450

Solubility Information

Solubility	PBS (pH 7.2): 0.8 mg/mL (2.5 mM),Sonication is recommended. Ethanol: Miscible DMSO: Miscible 0.1 m Na ₂ CO ₃ : 2 mg/mL (6.24 mM),Sonication is recommended. DMF: Miscible (< 1 mg/ml refers to the product slightly soluble or insoluble)
------------	--

Preparing Stock Solutions

	1mg	5mg	10mg
1 mM	3.1204 mL	15.6021 mL	31.2042 mL
5 mM	0.6241 mL	3.1204 mL	6.2408 mL
10 mM	0.312 mL	1.5602 mL	3.1204 mL
50 mM	0.0624 mL	0.312 mL	0.6241 mL

Please select the appropriate solvent to prepare the stock solution, according to the solubility of the product in different solvents. Please use it as soon as possible.

Note: The dilution table applies only to solid products. For liquid products, please calculate the stock solution based on the stated concentration and/or density.

Inhibitor · Natural Compounds · Compound Libraries · Recombinant Proteins

This product is for Research Use Only · Not for Human or Veterinary or Therapeutic Use

Tel:781-999-4286 E_mail:info@targetmol.com Address:34 Washington Street,Wellesley Hills,MA 02481