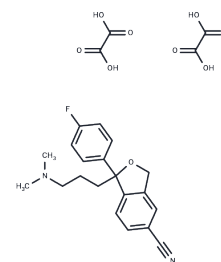


## Citalopram oxalate

## Chemical Properties

CAS No. :	207559-01-1
Formula:	C <sub>22</sub> H <sub>23</sub> FN <sub>2</sub> O <sub>5</sub>
Molecular Weight:	414.43
Storage:	Powder: -20°C for 3 years   In solvent: -80°C for 1 year Actual storage temperature shall be subject to the COA.



## Biological Description

Description	Citalopram oxalate is a furancarboxamide that is one of the SEROTONIN UPTAKE INHIBITORS used as an antidepressant. The drug is also effective in reducing ethanol uptake in alcoholics and is used in depressed patients who also suffer from tardive dyskinesia in preference to tricyclic antidepressants, which aggravate this condition.
Targets(IC50)	Others, Serotonin Transporter

## Preparing Stock Solutions

	1mg	5mg	10mg
1 mM	2.413 mL	12.0648 mL	24.1295 mL
5 mM	0.4826 mL	2.413 mL	4.8259 mL
10 mM	0.2413 mL	1.2065 mL	2.413 mL
50 mM	0.0483 mL	0.2413 mL	0.4826 mL

Please select the appropriate solvent to prepare the stock solution, according to the solubility of the product in different solvents. Please use it as soon as possible.

Note: The dilution table applies only to solid products. For liquid products, please calculate the stock solution based on the stated concentration and/or density.

Inhibitor · Natural Compounds · Compound Libraries · Recombinant Proteins

This product is for Research Use Only · Not for Human or Veterinary or Therapeutic Use

Tel: 781-999-4286 E\_mail: info@targetmol.com Address: 34 Washington Street, Wellesley Hills, MA 02481