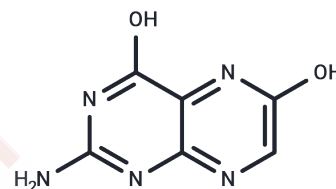


## Xanthopterin

## Chemical Properties

CAS No. :	119-44-8
Formula:	C <sub>6</sub> H <sub>5</sub> N <sub>5</sub> O <sub>2</sub>
Molecular Weight:	179.14
Storage:	Powder: -20°C for 3 years   In solvent: -80°C for 1 year Actual storage temperature shall be subject to the COA.



## Biological Description

Description	Xanthopterin could inhibit the growth of lymphocytes produced by concanavalin.
Targets(IC50)	Others,DNA/RNA Synthesis

## Solubility Information

Solubility	DMSO: Soluble, (< 1 mg/ml refers to the product slightly soluble or insoluble)
------------	---

## Preparing Stock Solutions

	1mg	5mg	10mg
1 mM	5.5822 mL	27.9111 mL	55.8223 mL
5 mM	1.1164 mL	5.5822 mL	11.1645 mL
10 mM	0.5582 mL	2.7911 mL	5.5822 mL
50 mM	0.1116 mL	0.5582 mL	1.1164 mL

Please select the appropriate solvent to prepare the stock solution, according to the solubility of the product in different solvents. Please use it as soon as possible.

Note: The dilution table applies only to solid products. For liquid products, please calculate the stock solution based on the stated concentration and/or density.

### Reference

Wan YQ, Tang LJ, Tan T. Simultaneous determination of xanthopterin and isoxanthopterin in human urine by synchronous fluorescence spectroscopy. *J Fluoresc.* 2010 Nov;20(6):1191-8. doi: 10.1007/s10895-010-0667-4. Epub 2010 Apr 24. PubMed PMID: 20419340.

Lord JL, de Peyster A, Quintana PJ, Metzger RP. Cytotoxicity of xanthopterin and isoxanthopterin in MCF-7 cells. *Cancer Lett.* 2005 May 10;222(1):119-24. PubMed PMID: 15837549.

Bakir AA, Shaykh M, Williams RH, Ahmed S, Dunea G. A study of xanthopterin in chronic renal failure. *Am J Nephrol.* 1992;12(4):224-8. PubMed PMID: 1481869.

Fukuda A, Mazda T, Gyure WL, Iino T, Harada H, Yakura M, Kamitsukasa H, Ohbayashi A, Oka T, Tsusue M. A comparative study of urinary xanthopterin and neopterin in liver diseases. *Eur J Clin Chem Clin Biochem.* 1993 Mar; 31(3):129-34. PubMed PMID: 8490058.

**Inhibitor · Natural Compounds · Compound Libraries · Recombinant Proteins**

This product is for Research Use Only · Not for Human or Veterinary or Therapeutic Use

Tel:781-999-4286 E\_mail:info@targetmol.com Address:34 Washington Street,Wellesley Hills,MA 02481