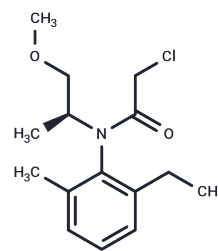


(S)-Metolachlor

Chemical Properties

CAS No. :	87392-12-9
Formula:	C ₁₅ H ₂₂ ClNO ₂
Molecular Weight:	283.79
Storage:	Pure form: -20°C for 3 years In solvent: -80°C for 1 year Actual storage temperature shall be subject to the COA.



Biological Description

Description	(S)-Metolachlor ((S)-Metolachlor) is a carcinogenic insecticide, a derivative of aniline, and is a frequent subject of research in agriculture and environmental protection.
Targets(IC50)	Others

Solubility Information

Solubility	DMSO: 60 mg/mL (211.42 mM),Sonication is recommended. (< 1 mg/ml refers to the product slightly soluble or insoluble)
In vivo Formulation	10% DMSO+40% PEG300+5% Tween 80+45% Saline: 2 mg/mL (7.05 mM),Sonication is recommended. <i>Please add the solvents sequentially, clarifying the solution as much as possible before adding the next one. Dissolve by heating and/or sonication if necessary. Working solution is recommended to be prepared and used immediately. The formulation provided above is for reference purposes only. In vivo formulations may vary and should be modified based on specific experimental conditions.</i>

Preparing Stock Solutions

	1mg	5mg	10mg
1 mM	3.5237 mL	17.6187 mL	35.2373 mL
5 mM	0.7047 mL	3.5237 mL	7.0475 mL
10 mM	0.3524 mL	1.7619 mL	3.5237 mL
50 mM	0.0705 mL	0.3524 mL	0.7047 mL

Please select the appropriate solvent to prepare the stock solution, according to the solubility of the product in different solvents. Please use it as soon as possible.

Note: The dilution table applies only to solid products. For liquid products, please calculate the stock solution based on the stated concentration and/or density.

Reference

Fauvelle V, et al. Simulated conservative tracer as a proxy for S-metolachlor concentration predictions compared to POCIS measurements in Arcachon Bay. Mar Pollut Bull. 2018 Aug;133:423-427.

Inhibitor · Natural Compounds · Compound Libraries · Recombinant Proteins

This product is for Research Use Only · Not for Human or Veterinary or Therapeutic Use

Tel:781-999-4286 E_mail:info@targetmol.com Address:34 Washington Street,Wellesley Hills,MA 02481