

Mc-Leu-Gly-Arg

Chemical Properties

CAS No. :

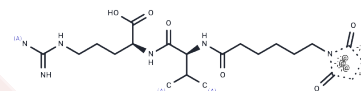
Formula: C₂₁H₃₄N₆O₆

Molecular Weight: 466.53

Keep away from direct sunlight

Storage: Powder: -20°C for 3 years | In solvent: -80°C for 1 year

Actual storage temperature shall be subject to the COA.



Biological Description

Description	Mc-Leu-Gly-Arg is a cleavable ether linker for antibody-drug conjugate (ADC) design.
Targets(IC50)	ADC Linker,PROTAC Linker

Preparing Stock Solutions

	1mg	5mg	10mg
1 mM	2.1435 mL	10.7174 mL	21.4348 mL
5 mM	0.4287 mL	2.1435 mL	4.287 mL
10 mM	0.2143 mL	1.0717 mL	2.1435 mL
50 mM	0.0429 mL	0.2143 mL	0.4287 mL

Please select the appropriate solvent to prepare the stock solution, according to the solubility of the product in different solvents. Please use it as soon as possible.

Note: The dilution table applies only to solid products. For liquid products, please calculate the stock solution based on the stated concentration and/or density.

Reference

Zhang D, et al. Immobilization of p-Aminobenzyl Ether Linker and Payload Potency and Stability Determine the Cell-Killing Activity of Antibody-Drug Conjugates with Phenol-Containing Payloads. *Bioconjug Chem.* 2018 Feb 21;29(2):267-274.

Inhibitor · Natural Compounds · Compound Libraries · Recombinant Proteins

This product is for Research Use Only · Not for Human or Veterinary or Therapeutic Use

Tel:781-999-4286 E_mail:info@targetmol.com Address:34 Washington Street,Wellesley Hills,MA 02481