

KRAS G12C inhibitor 19

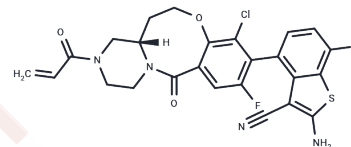
Chemical Properties

CAS No. : 2649788-46-3

Formula: C₂₅H₁₉ClF₂N₄O₃S

Molecular Weight: 528.96

Storage: Store at low temperature, Keep away from direct sunlight
 Powder: -20°C for 3 years | In solvent: -80°C for 1 year
 Actual storage temperature shall be subject to the COA.



Biological Description

Description	KRAS G12C inhibitor 19 is a potent KRAS G12C inhibitor that demonstrates anti-tumor activity in cellular assays and inhibits tumor growth [1].
Targets(IC50)	Ras,Kras

Solubility Information

Solubility	DMSO: 52.9 mg/mL (100.01 mM), Sonication is recommended. (< 1 mg/ml refers to the product slightly soluble or insoluble)
In vivo Formulation	10% DMSO+40% PEG300+5% Tween 80+45% Saline: 10 mg/mL (18.91 mM), Sonication is recommended. <i>Please add the solvents sequentially, clarifying the solution as much as possible before adding the next one. Dissolve by heating and/or sonication if necessary. Working solution is recommended to be prepared and used immediately. The formulation provided above is for reference purposes only. In vivo formulations may vary and should be modified based on specific experimental conditions.</i>

Preparing Stock Solutions

	1mg	5mg	10mg
1 mM	1.8905 mL	9.4525 mL	18.905 mL
5 mM	0.3781 mL	1.8905 mL	3.781 mL
10 mM	0.1891 mL	0.9453 mL	1.8905 mL
50 mM	0.0378 mL	0.1891 mL	0.3781 mL

Please select the appropriate solvent to prepare the stock solution, according to the solubility of the product in different solvents. Please use it as soon as possible.

Note: The dilution table applies only to solid products. For liquid products, please calculate the stock solution based on the stated concentration and/or density.

Reference

Serge Louis Boulet, et al. Kras g12c inhibitors. WO2021118877A1.

Inhibitor · Natural Compounds · Compound Libraries · Recombinant Proteins

This product is for Research Use Only · Not for Human or Veterinary or Therapeutic Use

Tel:781-999-4286 E_mail:info@targetmol.com Address:34 Washington Street,Wellesley Hills,MA 02481