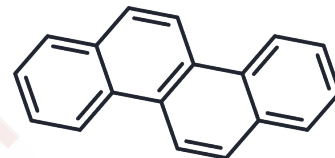


Chrysene

Chemical Properties

CAS No. :	218-01-9
Formula:	C18H12
Molecular Weight:	228.29
Storage:	Powder: -20°C for 3 years In solvent: -80°C for 1 year Actual storage temperature shall be subject to the COA.



Biological Description

Description	Chrysene is a high-molecular-weight polycyclic aromatic hydrocarbon (PAH) with strong persistence and carcinogenicity. It is commonly used for establishing liver cancer models.
Targets(IC50)	Others

Solubility Information

Solubility	DMSO: < 1 mg/mL (insoluble or slightly soluble), Sonication is recommended. (< 1 mg/ml refers to the product slightly soluble or insoluble)
------------	--

Preparing Stock Solutions

	1mg	5mg	10mg
1 mM	4.3804 mL	21.902 mL	43.8039 mL
5 mM	0.8761 mL	4.3804 mL	8.7608 mL
10 mM	0.438 mL	2.1902 mL	4.3804 mL
50 mM	0.0876 mL	0.438 mL	0.8761 mL

Please select the appropriate solvent to prepare the stock solution, according to the solubility of the product in different solvents. Please use it as soon as possible.

Note: The dilution table applies only to solid products. For liquid products, please calculate the stock solution based on the stated concentration and/or density.

Reference

Vaidya S, et al. Degradation of Chrysene by Enriched Bacterial Consortium. Front Microbiol. 2018 Jun 26;9:1333.

Inhibitor · Natural Compounds · Compound Libraries · Recombinant Proteins

This product is for Research Use Only · Not for Human or Veterinary or Therapeutic Use

Tel:781-999-4286 E_mail:info@targetmol.com Address:34 Washington Street,Wellesley Hills,MA 02481