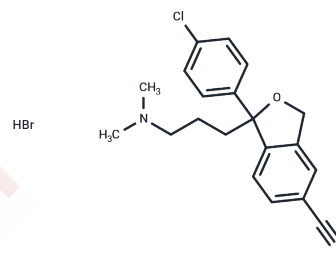


## Chlorocitalopram hydrobromide

## Chemical Properties

CAS No. :	64169-58-0
Formula:	C <sub>20</sub> H <sub>22</sub> BrClN <sub>2</sub> O
Molecular Weight:	421.76
Storage:	Powder: -20°C for 3 years   In solvent: -80°C for 1 year Actual storage temperature shall be subject to the COA.



## Biological Description

Description	Chlorocitalopram hydrobromide is an internal standard of Citalopram -- an inhibitor of serotonin (5-HT) uptake.
Targets(IC50)	Others

## Preparing Stock Solutions

	1mg	5mg	10mg
1 mM	2.371 mL	11.8551 mL	23.7102 mL
5 mM	0.4742 mL	2.371 mL	4.742 mL
10 mM	0.2371 mL	1.1855 mL	2.371 mL
50 mM	0.0474 mL	0.2371 mL	0.4742 mL

Please select the appropriate solvent to prepare the stock solution, according to the solubility of the product in different solvents. Please use it as soon as possible.

Note: The dilution table applies only to solid products. For liquid products, please calculate the stock solution based on the stated concentration and/or density.

**Inhibitor · Natural Compounds · Compound Libraries · Recombinant Proteins**

This product is for Research Use Only · Not for Human or Veterinary or Therapeutic Use

Tel:781-999-4286 E\_mail:info@targetmol.com Address:34 Washington Street,Wellesley Hills,MA 02481