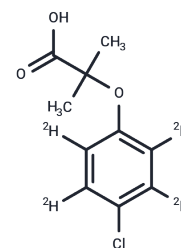


## Clofibrlic Acid-D4

## Chemical Properties

CAS No. :	1184991-14-7
Formula:	C <sub>10</sub> H <sub>7</sub> ClD <sub>4</sub> O <sub>3</sub>
Molecular Weight:	218.67
Storage:	Powder: -20°C for 3 years   In solvent: -80°C for 1 year Actual storage temperature shall be subject to the COA.



## Biological Description

Description	Clofibrlic Acid-D4 is intended for use as an internal standard for the quantification of Clofibrlic Acid (TMSM-0792) by GC- or LC-MS. Clofibrlic acid is a peroxisome proliferator-activated receptor $\alpha$ (PPAR $\alpha$ ) agonist (EC <sub>50</sub> = 50 $\mu$ M in a transactivation assay) and the active metabolite of clofibrate. It is formed from clofibrate by tissue and serum esterases. Dietary administration of clofibrlic acid (0.067-0.22%) reduces serum cholesterol, phospholipid, and triglyceride levels in rats. It decreases glutamate oxaloacetate transaminase (GOT) levels and increases glutamate pyruvate transaminase (GPT) and lactate dehydrogenase (LDH) levels, markers of xenobiotic stress, in the plasma of carp ( <i>C. carpio</i> ) when administered in tank water at a concentration of 10 $\mu$ g/L. Clofibrlic acid has been found in wastewater effluent.
Targets(IC50)	Drug Metabolite,PPAR

## Preparing Stock Solutions

	1mg	5mg	10mg
1 mM	4.5731 mL	22.8655 mL	45.731 mL
5 mM	0.9146 mL	4.5731 mL	9.1462 mL
10 mM	0.4573 mL	2.2866 mL	4.5731 mL
50 mM	0.0915 mL	0.4573 mL	0.9146 mL

Please select the appropriate solvent to prepare the stock solution, according to the solubility of the product in different solvents. Please use it as soon as possible.

Note: The dilution table applies only to solid products. For liquid products, please calculate the stock solution based on the stated concentration and/or density.

**Inhibitor · Natural Compounds · Compound Libraries · Recombinant Proteins**

This product is for Research Use Only · Not for Human or Veterinary or Therapeutic Use

Tel:781-999-4286 E\_mail:info@targetmol.com Address:34 Washington Street,Wellesley Hills,MA 02481