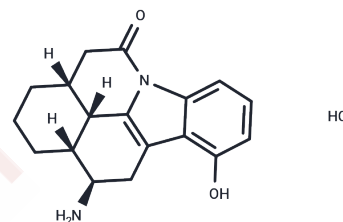


RS 2135

Chemical Properties

CAS No. : 133775-36-7
 Formula: C₁₈H₂₁ClN₂O₂
 Molecular Weight: 332.83
 Storage: Powder: -20°C for 3 years | In solvent: -80°C for 1 year
 Actual storage temperature shall be subject to the COA.



Biological Description

Description	RS 2135 is a novel class I antiarrhythmic agent to inhibit ischemia-induced ventricular arrhythmias.
Targets(IC50)	Others

Preparing Stock Solutions

	1mg	5mg	10mg
1 mM	3.0045 mL	15.0227 mL	30.0454 mL
5 mM	0.6009 mL	3.0045 mL	6.0091 mL
10 mM	0.3005 mL	1.5023 mL	3.0045 mL
50 mM	0.0601 mL	0.3005 mL	0.6009 mL

Please select the appropriate solvent to prepare the stock solution, according to the solubility of the product in different solvents. Please use it as soon as possible.

Note: The dilution table applies only to solid products. For liquid products, please calculate the stock solution based on the stated concentration and/or density.

Reference

- Yorikane R, Sada T, Koike H. Electrophysiologic effects of RS-2135, a new antiarrhythmic compound, on canine Purkinje fibers. *J Cardiovasc Pharmacol.* 1992 Dec;20(6):955-60. PubMed PMID: 1282599.
- Yorikane R, Mizuno H, Itoh Y, Miyake S, Koike H. Effects of RS-2135, a novel class I antiarrhythmic agent, on sustained ventricular tachycardia after coronary embolization in conscious dogs. *J Cardiovasc Pharmacol.* 1994 Jul; 24(1):28-36. PubMed PMID: 7521486.
- Yorikane R, Sada T, Koike H. Effects of RS-2135, a new antiarrhythmic agent, on the kinetics of use-dependent decrease in maximum upstroke velocity in guinea pig ventricular myocardium. *J Cardiovasc Pharmacol.* 1993 Mar; 21(3):430-4. PubMed PMID: 7681504.
- Ito K, Nagafuchi K, Taga A, Yorikane R, Koike H. Possible involvement of altered Na⁺-Ca²⁺ exchange in negative inotropic effects of class I antiarrhythmic drugs on rabbit and rat ventricles. *J Cardiovasc Pharmacol.* 1996 Mar;27 (3):355-61. PubMed PMID: 8907796.

Inhibitor · Natural Compounds · Compound Libraries · Recombinant Proteins

This product is for Research Use Only · Not for Human or Veterinary or Therapeutic Use

Tel:781-999-4286 E_mail:info@targetmol.com Address:34 Washington Street,Wellesley Hills,MA 02481