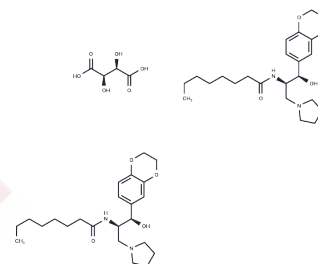


Eliglustat hemitartrate

Chemical Properties

CAS No. :	928659-70-5
Formula:	C25H39N2O7
Molecular Weight:	479.59
Storage:	Store under nitrogen, Store at low temperature Powder: -20°C for 3 years In solvent: -80°C for 1 year <i>Actual storage temperature shall be subject to the COA.</i>



Biological Description

Description	Eliglustat hemitartrate (Genz-112638) , with an IC50 of 24 nM, is a specific, potent, oral active glucocerebral glycosidase inhibitor.
Targets(IC50)	Others, Transferase
In vitro	Eliglustat tartrate demonstrates strong potency, with an IC50 of 24 nM, and high specificity against the target enzyme.
In vivo	A novel inhibitor of glucosylceramide synthase (Genz-112638) and assessed its activity in a murine model of Gaucher disease (D409V/null).?Biochemical characterization of Genz-112638 showed good potency (IC(50) approximately 24nM) and specificity against the target enzyme.?Mice that received drug prior to significant accumulation of substrate (10 weeks of age) showed reduced levels of glucosylceramide and number of Gaucher cells in the spleen, lung and liver when compared to age-matched control animals.?Treatment of older mice that already displayed significant amounts of tissue glucosylceramide (7 months old) resulted in arrest of further accumulation of the substrate and appearance of additional Gaucher cells in affected organs.?These data indicate that substrate inhibition therapy with Genz-112638 represents a viable alternate approach to enzyme therapy to treat the visceral pathology in Gaucher disease.

Solubility Information

Solubility	H2O: 50 mg/mL (104.26 mM), Sonication is recommended. DMSO: 50 mg/mL (104.26 mM), Sonication is recommended. (< 1 mg/ml refers to the product slightly soluble or insoluble)
In vivo Formulation	10% DMSO+40% PEG300+5% Tween 80+45% Saline: 2 mg/mL (4.17 mM), Sonication is recommended. <i>Please add the solvents sequentially, clarifying the solution as much as possible before adding the next one. Dissolve by heating and/or sonication if necessary. Working solution is recommended to be prepared and used immediately. The formulation provided above is for reference purposes only. In vivo formulations may vary and should be modified based on specific experimental conditions.</i>

Preparing Stock Solutions

	1mg	5mg	10mg
1 mM	2.0851 mL	10.4256 mL	20.8511 mL
5 mM	0.417 mL	2.0851 mL	4.1702 mL
10 mM	0.2085 mL	1.0426 mL	2.0851 mL
50 mM	0.0417 mL	0.2085 mL	0.417 mL

Please select the appropriate solvent to prepare the stock solution, according to the solubility of the product in different solvents. Please use it as soon as possible.

Note: The dilution table applies only to solid products. For liquid products, please calculate the stock solution based on the stated concentration and/or density.

Reference

McEachern KA, et al. A specific and potent inhibitor of glucosylceramide synthase for substrate inhibition therapy of Gaucher disease. *Mol Genet Metab.* 2007 Jul;91(3):259-67.

Inhibitor · Natural Compounds · Compound Libraries · Recombinant Proteins

This product is for Research Use Only · Not for Human or Veterinary or Therapeutic Use

Tel: 781-999-4286 E_mail: info@targetmol.com Address: 34 Washington Street, Wellesley Hills, MA 02481