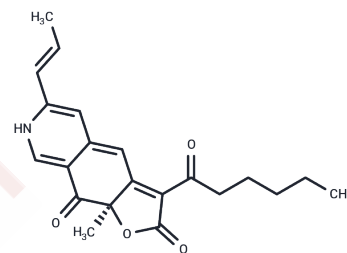


## Rubropunctatin

## Chemical Properties

CAS No. :	514-66-9
Formula:	C <sub>21</sub> H <sub>23</sub> NO <sub>4</sub>
Molecular Weight:	353.41
Storage:	Powder: -20°C for 3 years   In solvent: -80°C for 1 year Actual storage temperature shall be subject to the COA.



## Biological Description

Description	Rubropunctatin is a monascus pigment with very potent cancer cell proliferation inhibitory effects.
Targets(IC50)	Others, Antibacterial, Antifection, Antifungal

## Preparing Stock Solutions

	1mg	5mg	10mg
1 mM	2.8296 mL	14.1479 mL	28.2957 mL
5 mM	0.5659 mL	2.8296 mL	5.6591 mL
10 mM	0.283 mL	1.4148 mL	2.8296 mL
50 mM	0.0566 mL	0.283 mL	0.5659 mL

Please select the appropriate solvent to prepare the stock solution, according to the solubility of the product in different solvents. Please use it as soon as possible.

Note: The dilution table applies only to solid products. For liquid products, please calculate the stock solution based on the stated concentration and/or density.

## Reference

- Zheng Y, Zhang Y, Chen D, Chen H, Lin L, Zheng C, Guo Y. Monascus Pigment Rubropunctatin: A Potential Dual Agent for Cancer Chemotherapy and Phototherapy. *J Agric Food Chem*. 2016 Mar 30;64(12):2541-8. doi: 10.1021/acs.jafc.5b05343. Epub 2016 Mar 16. PubMed PMID: 26953890.
- Zheng Y, Xin Y, Shi X, Guo Y. Anti-cancer effect of rubropunctatin against human gastric carcinoma cells BGC-823. *Appl Microbiol Biotechnol*. 2010 Nov;88(5):1169-77. doi: 10.1007/s00253-010-2834-6. Epub 2010 Aug 21. PubMed PMID: 20730532.
- Zheng Y, Xin Y, Shi X, Guo Y. Cytotoxicity of Monascus pigments and their derivatives to human cancer cells. *J Agric Food Chem*. 2010 Sep 8;58(17):9523-8. doi: 10.1021/jf102128t. PubMed PMID: 20707312.
- Chen D, Xue C, Chen M, Wu S, Li Z, Wang C. Effects of blue light on pigment biosynthesis of Monascus. *J Microbiol*. 2016 Apr;54(4):305-10. doi: 10.1007/s12275-016-6011-1. Epub 2016 Apr 1. PubMed PMID: 27033206.

**Inhibitor · Natural Compounds · Compound Libraries · Recombinant Proteins**

This product is for Research Use Only · Not for Human or Veterinary or Therapeutic Use

Tel:781-999-4286 E\_mail:info@targetmol.com Address:34 Washington Street,Wellesley Hills,MA 02481