

PRLX-93936 HCL

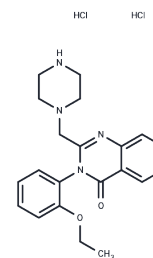
## Chemical Properties

CAS No. : 1094210-96-4

Formula: C<sub>21</sub>H<sub>26</sub>Cl<sub>2</sub>N<sub>4</sub>O<sub>2</sub>

Molecular Weight: 437.37

Storage: Keep away from moisture, Store under nitrogen  
 Powder: -20°C for 3 years | In solvent: -80°C for 1 year  
*Actual storage temperature shall be subject to the COA.*



## Biological Description

Description	PRLX-93936 HCL is an analog of erastin and demonstrated synergistic effects against non-small cell lung cancer (NSCLC) cells with cisplatin.
Targets(IC50)	Ferroptosis, Reactive Oxygen Species, HIF/HIF Prolyl-Hydroxylase, Ras
In vitro	Cotreatment with cisplatin and PRLX93936 induced ferroptosis, as evidenced by the upregulation of ROS, lipid peroxidation and Fe <sup>2+</sup> . Further investigation revealed that cotreatment with cisplatin and PRLX93936 inhibited GPX4 and that overexpression of GPX4 prevented cell death. Moreover, the Nrf2/Keap1 pathway also regulated the sensitivity to cisplatin and PRLX93936 in NSCLC cells. Nrf2 silencing increased this sensitivity while inhibition of Keap1 attenuated it[1].

## Solubility Information

Solubility	DMSO: 50 mg/mL (114.32 mM), Sonication is recommended. (< 1 mg/ml refers to the product slightly soluble or insoluble)
------------	---

### Preparing Stock Solutions

	1mg	5mg	10mg
1 mM	2.2864 mL	11.432 mL	22.8639 mL
5 mM	0.4573 mL	2.2864 mL	4.5728 mL
10 mM	0.2286 mL	1.1432 mL	2.2864 mL
50 mM	0.0457 mL	0.2286 mL	0.4573 mL

Please select the appropriate solvent to prepare the stock solution, according to the solubility of the product in different solvents. Please use it as soon as possible.

Note: The dilution table applies only to solid products. For liquid products, please calculate the stock solution based on the stated concentration and/or density.

Reference

Liang Z, et al. Cisplatin synergizes with PRLX93936 to induce ferroptosis in non-small cell lung cancer cells. Biochem Biophys Res Commun. 2021 Sep 10;569:79-85.

**Inhibitor · Natural Compounds · Compound Libraries · Recombinant Proteins**

This product is for Research Use Only · Not for Human or Veterinary or Therapeutic Use

Tel:781-999-4286 E\_mail:info@targetmol.com Address:34 Washington Street,Wellesley Hills,MA 02481