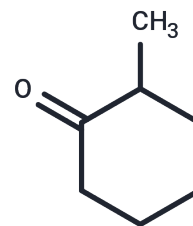


## 2-Methylcyclohexanone

## Chemical Properties

CAS No. :	583-60-8
Formula:	C <sub>7</sub> H <sub>12</sub> O
Molecular Weight:	112.17
Storage:	Keep away from moisture Powder: -20°C for 3 years   In solvent: -80°C for 1 year <small>Actual storage temperature shall be subject to the COA.</small>



## Biological Description

Description	2-Methylcyclohexanone is a human endogenous metabolite.
Targets(IC50)	Endogenous Metabolite,Antifungal

## Solubility Information

Solubility	DMSO: 55 mg/mL (490.33 mM),Sonication is recommended. (< 1 mg/ml refers to the product slightly soluble or insoluble)
In vivo Formulation	10% DMSO+40% PEG300+5% Tween 80+45% Saline: 2 mg/mL (17.83 mM),Sonication is recommended. <i>Please add the solvents sequentially, clarifying the solution as much as possible before adding the next one. Dissolve by heating and/or sonication if necessary. Working solution is recommended to be prepared and used immediately. The formulation provided above is for reference purposes only. In vivo formulations may vary and should be modified based on specific experimental conditions.</i>

## Preparing Stock Solutions

	1mg	5mg	10mg
1 mM	8.915 mL	44.5752 mL	89.1504 mL
5 mM	1.783 mL	8.915 mL	17.8301 mL
10 mM	0.8915 mL	4.4575 mL	8.915 mL
50 mM	0.1783 mL	0.8915 mL	1.783 mL

Please select the appropriate solvent to prepare the stock solution, according to the solubility of the product in different solvents. Please use it as soon as possible.

Note: The dilution table applies only to solid products. For liquid products, please calculate the stock solution based on the stated concentration and/or density.

Reference

Kawamoto M, et al. Biotransformation of (+/-)-2-methylcyclohexanone by fungi. Biotechnol Lett. 2008 Sep;30(9): 1655-60.

**Inhibitor · Natural Compounds · Compound Libraries · Recombinant Proteins**

This product is for Research Use Only · Not for Human or Veterinary or Therapeutic Use

Tel:781-999-4286 E\_mail:info@targetmol.com Address:34 Washington Street,Wellesley Hills,MA 02481