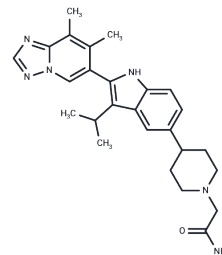


## Afimedoran

## Chemical Properties

|                   |  |
|-------------------|--|
| CAS No. :         | 2171019-55-7   |
| Formula:          | C <sub>26</sub> H <sub>32</sub> N <sub>6</sub> O   |
| Molecular Weight: | 444.57   |
| Storage:          | Store at low temperature<br>Powder: -20°C for 3 years   In solvent: -80°C for 1 year<br><i>Actual storage temperature shall be subject to the COA.</i> |



## Biological Description

|               |   |
|---------------|---|
| Description   | Afimedoran (BMS-986256) is a toll-like receptor antagonist. Afimedoran can be used in the research of inflammatory and autoimmune diseases. |
| Targets(IC50) | Apoptosis,NF-κB,TLR   |

## Solubility Information

|                     |  |
|---------------------|--|
| Solubility          | 1M HCL: 67.5 mg/mL (151.83 mM)<br>DMSO: 98 mg/mL (220.44 mM),when pH is adjusted to 2 with HCL. Sonication is recommended.<br>(< 1 mg/ml refers to the product slightly soluble or insoluble)  |
| In vivo Formulation | 10% DMSO+40% PEG300+5% Tween 80+45% Saline: 3.3 mg/mL (7.42 mM),Sonication is recommended.<br><i>Please add the solvents sequentially, clarifying the solution as much as possible before adding the next one. Dissolve by heating and/or sonication if necessary. Working solution is recommended to be prepared and used immediately. The formulation provided above is for reference purposes only. In vivo formulations may vary and should be modified based on specific experimental conditions.</i> |

### Preparing Stock Solutions

---

|       | <b>1mg</b> | <b>5mg</b> | <b>10mg</b> |
|-------|------------|------------|-------------|
| 1 mM  | 2.2494 mL  | 11.2468 mL | 22.4936 mL  |
| 5 mM  | 0.4499 mL  | 2.2494 mL  | 4.4987 mL   |
| 10 mM | 0.2249 mL  | 1.1247 mL  | 2.2494 mL   |
| 50 mM | 0.045 mL   | 0.2249 mL  | 0.4499 mL   |

---

Please select the appropriate solvent to prepare the stock solution, according to the solubility of the product in different solvents. Please use it as soon as possible.

Note: The dilution table applies only to solid products. For liquid products, please calculate the stock solution based on the stated concentration and/or density.

**Inhibitor · Natural Compounds · Compound Libraries · Recombinant Proteins**

This product is for Research Use Only · Not for Human or Veterinary or Therapeutic Use

Tel:781-999-4286 E\_mail:info@targetmol.com Address:34 Washington Street,Wellesley Hills,MA 02481