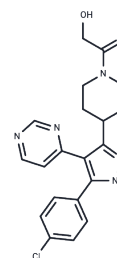


SD 0006

Chemical Properties

CAS No. : 271576-80-8
 Formula: C₂₀H₂₀ClN₅O₂
 Molecular Weight: 397.86
 Storage: Powder: -20°C for 3 years | In solvent: -80°C for 1 year
 Actual storage temperature shall be subject to the COA.



Biological Description

Description	SD 0006 (SD-06) is a MAPK p38 alpha inhibitor with an IC ₅₀ of 110 nM, indicated for the treatment of arthritis.
Targets(IC ₅₀)	Autophagy,p38 MAPK

Solubility Information

Solubility	DMSO: 29 mg/mL (72.89 mM),Sonication is recommended. (< 1 mg/ml refers to the product slightly soluble or insoluble)
In vivo Formulation	10% DMSO+40% PEG300+5% Tween 80+45% Saline: 2 mg/mL (5.03 mM),Sonication is recommended. <i>Please add the solvents sequentially, clarifying the solution as much as possible before adding the next one. Dissolve by heating and/or sonication if necessary. Working solution is recommended to be prepared and used immediately. The formulation provided above is for reference purposes only. In vivo formulations may vary and should be modified based on specific experimental conditions.</i>

Preparing Stock Solutions

	1mg	5mg	10mg
1 mM	2.5134 mL	12.5672 mL	25.1345 mL
5 mM	0.5027 mL	2.5134 mL	5.0269 mL
10 mM	0.2513 mL	1.2567 mL	2.5134 mL
50 mM	0.0503 mL	0.2513 mL	0.5027 mL

Please select the appropriate solvent to prepare the stock solution, according to the solubility of the product in different solvents. Please use it as soon as possible.

Note: The dilution table applies only to solid products. For liquid products, please calculate the stock solution based on the stated concentration and/or density.

Reference

Walker J K , Selness S R , Devraj R V , et al. Identification of SD-0006, a potent diaryl pyrazole inhibitor of p38 MAP kinase[J]. Bioorganic & medicinal chemistry letters, 2010, 20(8):2634-2638.

Inhibitor · Natural Compounds · Compound Libraries · Recombinant Proteins

This product is for Research Use Only· Not for Human or Veterinary or Therapeutic Use

Tel:781-999-4286 E_mail:info@targetmol.com Address:34 Washington Street,Wellesley Hills,MA 02481