

Mc-Gly-Gly-Phe-Gly-PAB-OH

Chemical Properties

CAS No. : 2632342-05-1

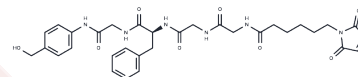
Formula: C₃₂H₃₈N₆O₈

Molecular Weight: 634.68

Keep away from moisture

Storage: Powder: -20°C for 3 years | In solvent: -80°C for 1 year

Actual storage temperature shall be subject to the COA.



Biological Description

Description	Mc-Gly-Gly-Phe-Gly-PAB-OH is a cleavable linker used for the synthesis of antibody-drug conjugates (ADCs).
Targets(IC50)	ADC Linker
In vitro	ADCs consist of an antibody linked to an ADC cytotoxin via an ADC linker.

Solubility Information

Solubility	DMSO: 200 mg/mL (315.12 mM), Sonication is recommended. (< 1 mg/ml refers to the product slightly soluble or insoluble)
------------	----------------------------------------------------------------------------------------------------------------------------

Preparing Stock Solutions

	1mg	5mg	10mg
1 mM	1.5756 mL	7.878 mL	15.756 mL
5 mM	0.3151 mL	1.5756 mL	3.1512 mL
10 mM	0.1576 mL	0.7878 mL	1.5756 mL
50 mM	0.0315 mL	0.1576 mL	0.3151 mL

Please select the appropriate solvent to prepare the stock solution, according to the solubility of the product in different solvents. Please use it as soon as possible.

Note: The dilution table applies only to solid products. For liquid products, please calculate the stock solution based on the stated concentration and/or density.

Inhibitor · Natural Compounds · Compound Libraries · Recombinant Proteins

This product is for Research Use Only · Not for Human or Veterinary or Therapeutic Use

Tel:781-999-4286 E_mail:info@targetmol.com Address:34 Washington Street,Wellesley Hills,MA 02481