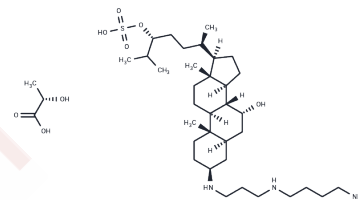


## Squalamine lactate

### Chemical Properties

CAS No. :	320725-47-1
Formula:	C37H71N3O8S
Molecular Weight:	718.04
Storage:	Powder: -20°C for 3 years   In solvent: -80°C for 1 year Actual storage temperature shall be subject to the COA.



### Biological Description

Description	Squalamine lactate, an aminosterol compound discovered in the tissues of the dogfish shark, exhibits antimicrobial activity.
Targets(IC50)	Others,Antibacterial
In vitro	Squalamine lactate has a more general effect on the cell signaling cascade, which is common to VEGF and other growth factors[1]. Squalamine blocks the action of VEGF and integrin expression, thereby inhibiting angiogenesis, when bound to calmodulin[2].
In vivo	When administered intravitreally and therefore requires intravenous dosing, Squalamine is ineffective . However, systemic dosing has yielded promising results in rats as well as humans[2].

### Solubility Information

Solubility	DMSO: 36.66 mg/mL (51.06 mM),Sonication is recommended. (< 1 mg/ml refers to the product slightly soluble or insoluble)
------------	--

### Preparing Stock Solutions

	1mg	5mg	10mg
1 mM	1.3927 mL	6.9634 mL	13.9268 mL
5 mM	0.2785 mL	1.3927 mL	2.7854 mL
10 mM	0.1393 mL	0.6963 mL	1.3927 mL
50 mM	0.0279 mL	0.1393 mL	0.2785 mL

Please select the appropriate solvent to prepare the stock solution, according to the solubility of the product in different solvents. Please use it as soon as possible.

Note: The dilution table applies only to solid products. For liquid products, please calculate the stock solution based on the stated concentration and/or density.

Reference

Hussain RM, et al. Emerging vascular endothelial growth factor antagonists to treat neovascular age-related macular degeneration. *Expert Opin Emerg Drugs*. 2017 Sep;22(3):235-246.

Emerson MV, et al. Current and emerging therapies for the treatment of age-related macular degeneration. *Clin Ophthalmol*. 2008 Jun;2(2):377-88.

**Inhibitor · Natural Compounds · Compound Libraries · Recombinant Proteins**

This product is for Research Use Only · Not for Human or Veterinary or Therapeutic Use

Tel:781-999-4286 E\_mail:info@targetmol.com Address:34 Washington Street,Wellesley Hills,MA 02481