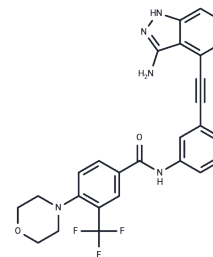


BCR-ABL-IN-6

## Chemical Properties

CAS No. : 2499499-26-0  
 Formula: C<sub>27</sub>H<sub>22</sub>F<sub>3</sub>N<sub>5</sub>O<sub>2</sub>  
 Molecular Weight: 505.49  
 Storage: Powder: -20°C for 3 years | In solvent: -80°C for 1 year  
 Actual storage temperature shall be subject to the COA.



## Biological Description

|                            |  |
|----------------------------|--|
| Description                | BCR-ABL-IN-6 (9h) is an imatinib derivative and a selective inhibitor of Bcr-Abl kinase, showing activity on Bcr-AblWT (IC <sub>50</sub> : 4.6 nM) and Bcr-AblT3151 (IC <sub>50</sub> : 277 nM). BCR-ABL-IN-6 (9h) is utilized in studying chronic myeloid leukemia treatment. |
| Targets(IC <sub>50</sub> ) | Others,Bcr-Abl   |

## Preparing Stock Solutions

|       | 1mg       | 5mg       | 10mg       |
|-------|-----------|-----------|------------|
| 1 mM  | 1.9783 mL | 9.8914 mL | 19.7828 mL |
| 5 mM  | 0.3957 mL | 1.9783 mL | 3.9566 mL  |
| 10 mM | 0.1978 mL | 0.9891 mL | 1.9783 mL  |
| 50 mM | 0.0396 mL | 0.1978 mL | 0.3957 mL  |

Please select the appropriate solvent to prepare the stock solution, according to the solubility of the product in different solvents. Please use it as soon as possible.

Note: The dilution table applies only to solid products. For liquid products, please calculate the stock solution based on the stated concentration and/or density.

Inhibitor · Natural Compounds · Compound Libraries · Recombinant Proteins

This product is for Research Use Only · Not for Human or Veterinary or Therapeutic Use

Tel:781-999-4286 E\_mail:info@targetmol.com Address:34 Washington Street,Wellesley Hills,MA 02481