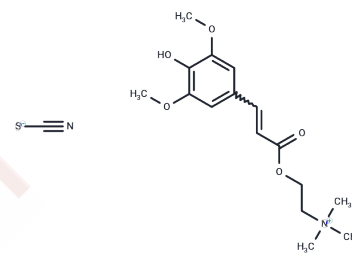


Sinapine thiocyanate

Chemical Properties

CAS No. :	7431-77-8
Formula:	C ₁₆ H ₂₄ NO ₅ ·CNS
Molecular Weight:	368.45
Storage:	Keep away from direct sunlight Powder: -20°C for 3 years In solvent: -80°C for 1 year <i>Actual storage temperature shall be subject to the COA.</i>



Biological Description

Description	Sinapine Thiocyanate, is a derivative of Sinapine (S486605), an alkaloidal amine found in black mustard seeds. It is the choline ester of Sinapic Acid (S486800). It is also a phenolic-choline conjugates, acting as anti-oxidants and acetylcholinesterase inhibitors, that can be used for the treatment of Alzheimer's disease (AD).
Targets(IC50)	Cholinesterase (ChE),P-gp

Solubility Information

Solubility	DMSO: 50 mg/mL (135.7 mM),Sonication is recommended. (< 1 mg/ml refers to the product slightly soluble or insoluble)
In vivo Formulation	10% DMSO+40% PEG300+5% Tween 80+45% Saline: 2 mg/mL (5.43 mM),Sonication is recommended. <i>Please add the solvents sequentially, clarifying the solution as much as possible before adding the next one. Dissolve by heating and/or sonication if necessary. Working solution is recommended to be prepared and used immediately. The formulation provided above is for reference purposes only. In vivo formulations may vary and should be modified based on specific experimental conditions.</i>

Preparing Stock Solutions

	1mg	5mg	10mg
1 mM	2.7141 mL	13.5704 mL	27.1407 mL
5 mM	0.5428 mL	2.7141 mL	5.4281 mL
10 mM	0.2714 mL	1.357 mL	2.7141 mL
50 mM	0.0543 mL	0.2714 mL	0.5428 mL

Please select the appropriate solvent to prepare the stock solution, according to the solubility of the product in different solvents. Please use it as soon as possible.

Note: The dilution table applies only to solid products. For liquid products, please calculate the stock solution based on the stated concentration and/or density.

Reference

Zhang QS, et al. Zhongguo Zhong Yao Za Zhi. 2014 Nov;39(22):4345-8.

Inhibitor · Natural Compounds · Compound Libraries · Recombinant Proteins

This product is for Research Use Only · Not for Human or Veterinary or Therapeutic Use

Tel:781-999-4286 E_mail:info@targetmol.com Address:34 Washington Street,Wellesley Hills,MA 02481