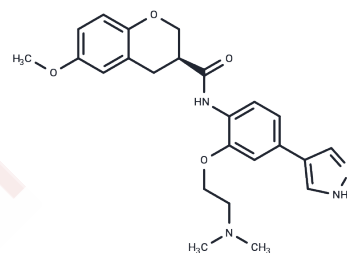


Chroman 1

Chemical Properties

CAS No. :	1273579-40-0
Formula:	C ₂₄ H ₂₈ N ₄ O ₄
Molecular Weight:	436.5
Storage:	Powder: -20°C for 3 years In solvent: -80°C for 1 year Actual storage temperature shall be subject to the COA.



Biological Description

Description	Chroman 1 is a potent inhibitor of ROCK1 (IC ₅₀ = 52 pM) and ROCK2 (IC ₅₀ = 1 pM).
Targets(IC ₅₀)	ROCK
In vitro	Chroman 1 also shows inhibitory activities against MRCK (IC ₅₀ : 150 nM). However, it has no effect on PKA (IC ₅₀ , > 20000 nM) or AKT1 (IC ₅₀ , > 20000 nM).

Solubility Information

Solubility	DMSO: 50 mg/mL (114.55 mM), Sonication is recommended. (< 1 mg/ml refers to the product slightly soluble or insoluble)
In vivo Formulation	10% DMSO+90% Corn Oil: 3.3 mg/mL (7.56 mM), Sonication is recommended. <i>Please add the solvents sequentially, clarifying the solution as much as possible before adding the next one. Dissolve by heating and/or sonication if necessary. Working solution is recommended to be prepared and used immediately. The formulation provided above is for reference purposes only. In vivo formulations may vary and should be modified based on specific experimental conditions.</i>

Preparing Stock Solutions

	1mg	5mg	10mg
1 mM	2.291 mL	11.4548 mL	22.9095 mL
5 mM	0.4582 mL	2.291 mL	4.5819 mL
10 mM	0.2291 mL	1.1455 mL	2.291 mL
50 mM	0.0458 mL	0.2291 mL	0.4582 mL

Please select the appropriate solvent to prepare the stock solution, according to the solubility of the product in different solvents. Please use it as soon as possible.

Note: The dilution table applies only to solid products. For liquid products, please calculate the stock solution based on the stated concentration and/or density.

Reference

Yen Ting Chen, et al. Asymmetric synthesis of potent chroman-based Rho kinase (ROCK-II) inhibitors. Med.Chem. Commun., 2011, 2, 73-75.

Inhibitor · Natural Compounds · Compound Libraries · Recombinant Proteins

This product is for Research Use Only· Not for Human or Veterinary or Therapeutic Use

Tel:781-999-4286 E_mail:info@targetmol.com Address:34 Washington Street,Wellesley Hills,MA 02481