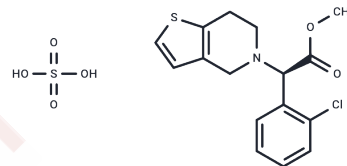


Clopidogrel Related Compound C

Chemical Properties

CAS No. : 120202-71-3
 Formula: C₁₆H₁₈ClNO₆S₂
 Molecular Weight: 419.9
 Storage: Powder: -20°C for 3 years | In solvent: -80°C for 1 year
 Actual storage temperature shall be subject to the COA.



Biological Description

Description	Clopidogrel Related Compound C is an isomer of Clopidogrel. Clopidogrel is a P2Y ₁₂ receptor antagonist that reduces platelet aggregation, used to prevent thrombotic events in coronary artery disease, peripheral artery disease, and cerebrovascular disease.
Targets(IC50)	Others

Preparing Stock Solutions

	1mg	5mg	10mg
1 mM	2.3815 mL	11.9076 mL	23.8152 mL
5 mM	0.4763 mL	2.3815 mL	4.763 mL
10 mM	0.2382 mL	1.1908 mL	2.3815 mL
50 mM	0.0476 mL	0.2382 mL	0.4763 mL

Please select the appropriate solvent to prepare the stock solution, according to the solubility of the product in different solvents. Please use it as soon as possible.

Note: The dilution table applies only to solid products. For liquid products, please calculate the stock solution based on the stated concentration and/or density.

Reference

Mohan A, et al. Identification and characterization of a principal oxidation impurity in clopidogrel drug substance and drug product. J Pharm Biomed Anal. 2008 May 12;47(1):183-9.

Inhibitor · Natural Compounds · Compound Libraries · Recombinant Proteins

This product is for Research Use Only · Not for Human or Veterinary or Therapeutic Use

Tel:781-999-4286 E_mail:info@targetmol.com Address:34 Washington Street,Wellesley Hills,MA 02481