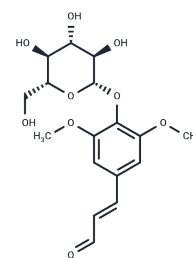


Sinapaldehyde glucoside

Chemical Properties

CAS No. :	154461-65-1
Formula:	C17H22O9
Molecular Weight:	370.35
Storage:	Powder: -20°C for 3 years In solvent: -80°C for 1 year Actual storage temperature shall be subject to the COA.



Biological Description

Description	Sinapaldehyde glucoside is a glucoside isolated from the bark of Ilex rotunda, with antioxidant and antimicrobial activities, inhibiting bacterial and fungal growth.
Targets(IC50)	Antiviral, Antibacterial

Preparing Stock Solutions

	1mg	5mg	10mg
1 mM	2.7001 mL	13.5007 mL	27.0015 mL
5 mM	0.540 mL	2.7001 mL	5.4003 mL
10 mM	0.270 mL	1.3501 mL	2.7001 mL
50 mM	0.054 mL	0.270 mL	0.540 mL

Please select the appropriate solvent to prepare the stock solution, according to the solubility of the product in different solvents. Please use it as soon as possible.

Note: The dilution table applies only to solid products. For liquid products, please calculate the stock solution based on the stated concentration and/or density.

Reference

Ida Y, et al. Phenolic constituents of Phellodendron amurense bark[J]. Phytochemistry, 1993, 35(1): 209-215.

Inhibitor · Natural Compounds · Compound Libraries · Recombinant Proteins

This product is for Research Use Only · Not for Human or Veterinary or Therapeutic Use

Tel: 781-999-4286 E_mail: info@targetmol.com Address: 34 Washington Street, Wellesley Hills, MA 02481