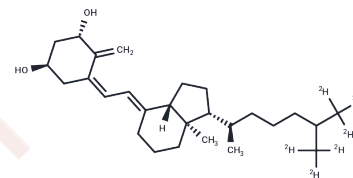


## Alfacalcidol-D6

## Chemical Properties

CAS No. :	1641940-94-4
Formula:	C <sub>27</sub> H <sub>44</sub> O <sub>2</sub>
Molecular Weight:	406.67
Storage:	Powder: -20°C for 3 years   In solvent: -80°C for 1 year Actual storage temperature shall be subject to the COA.



## Biological Description

Description	Alfacalcidol-D6 is a deuterated Alfacalcidol. Alfacalcidol (T6374) is a non-selective VDR activator medication.
Targets(IC50)	Vitamin

## Preparing Stock Solutions

	1mg	5mg	10mg
1 mM	2.459 mL	12.295 mL	24.590 mL
5 mM	0.4918 mL	2.459 mL	4.918 mL
10 mM	0.2459 mL	1.2295 mL	2.459 mL
50 mM	0.0492 mL	0.2459 mL	0.4918 mL

Please select the appropriate solvent to prepare the stock solution, according to the solubility of the product in different solvents. Please use it as soon as possible.

Note: The dilution table applies only to solid products. For liquid products, please calculate the stock solution based on the stated concentration and/or density.

## Reference

- Shiraishi et al (2000) Alfacalcidol inhibits bone resorption and stimulates formation in an ovariectomized rat model of osteoporosis: Distinct actions from estrogen. *Journal of Bone and Mineral Research*. 15 770.
- Ringe JD, Schacht E. et al. Prevention and therapy of osteoporosis: the roles of plain vitamin D and alfacalcidol. *Rheumatol Int*. 2004 Jul;24(4):189-97.
- Ivarsen P, Povlsen JV, Christensen KL. Effect of alfacalcidol on cardiac function in patients with chronic kidney disease stage 4 and secondary hyperparathyroidism: A pilot study. *Scand J Urol Nephrol*. 2012 Jun 25.
- Rianthavorn P, et al. Prevention of bone loss in children receiving long-term glucocorticoids with calcium and alfacalcidol or menatetrenone. *J Pediatr Endocrinol Metab*. 2012;25(3-4):307-12.
- Ringe JD, Farahmand P, Schacht E. Alfacalcidol in men with osteoporosis: a prospective, observational, 2-year trial on 214 patients. *Rheumatol Int*. 2012 Apr 8.

**Inhibitor · Natural Compounds · Compound Libraries · Recombinant Proteins**

This product is for Research Use Only · Not for Human or Veterinary or Therapeutic Use

Tel:781-999-4286 E\_mail:info@targetmol.com Address:34 Washington Street,Wellesley Hills,MA 02481