

WWL123

## Chemical Properties

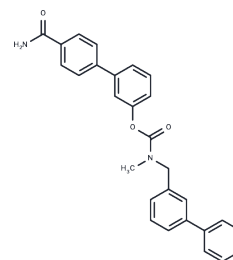
CAS No. : 1338575-41-9

Formula: C<sub>28</sub>H<sub>24</sub>N<sub>2</sub>O<sub>3</sub>

Molecular Weight: 436.5

Storage: Powder: -20°C for 3 years | In solvent: -80°C for 1 year

Actual storage temperature shall be subject to the COA.



## Biological Description

Description	WWL123 is a potent and selective ABHD6 inhibitor (IC <sub>50</sub> =430 nM). WWL123 crosses the blood-brain-barrier and inhibits ABHD6 in brain parenchyma. ABHD6 blockade by WWL123 exerts an antiepileptic effect in Pentylene-tetrazole (PTZ)-induced epileptiform seizures and spontaneous seizures in R6/2 mice.
Targets(IC <sub>50</sub> )	MAGL

## Solubility Information

Solubility	DMSO: 0.9 mg/mL (2.06 mM), Sonication is recommended. (< 1 mg/ml refers to the product slightly soluble or insoluble)
------------	--

## Preparing Stock Solutions

	1mg	5mg	10mg
1 mM	2.291 mL	11.4548 mL	22.9095 mL
5 mM	0.4582 mL	2.291 mL	4.5819 mL
10 mM	0.2291 mL	1.1455 mL	2.291 mL
50 mM	0.0458 mL	0.2291 mL	0.4582 mL

Please select the appropriate solvent to prepare the stock solution, according to the solubility of the product in different solvents. Please use it as soon as possible.

Note: The dilution table applies only to solid products. For liquid products, please calculate the stock solution based on the stated concentration and/or density.

### Reference

Daniel A Bachovchin, et al. Superfamily-wide portrait of serine hydrolase inhibition achieved by library-versus-library screening. *Proc Natl Acad Sci U S A*. 2010 Dec 7;107(49):20941-6.

Peng Zhong, et al. Genetic deletion of monoacylglycerol lipase alters endocannabinoid-mediated retrograde synaptic depression in the cerebellum. *J Physiol*. 2011 Oct 15;589(Pt 20):4847-55.

Alipi V Naydenov, et al. ABHD6 blockade exerts antiepileptic activity in PTZ-induced seizures and in spontaneous seizures in R6/2 mice. *Neuron*. 2014 Jul 16;83(2):361-371.

**Inhibitor · Natural Compounds · Compound Libraries · Recombinant Proteins**

This product is for Research Use Only · Not for Human or Veterinary or Therapeutic Use

Tel:781-999-4286 E\_mail:info@targetmol.com Address:34 Washington Street,Wellesley Hills,MA 02481