

## Corylin

## Chemical Properties

CAS No. : 53947-92-5

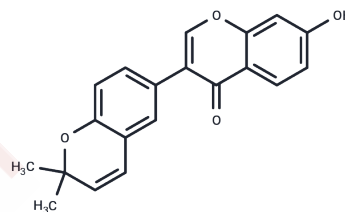
Formula: C<sub>20</sub>H<sub>16</sub>O<sub>4</sub>

Molecular Weight: 320.34

Keep away from direct sunlight

Storage: Powder: -20°C for 3 years | In solvent: -80°C for 1 year

Actual storage temperature shall be subject to the COA.



## Biological Description

Description	Corylin is a major bioactive compound isolated from <i>Psoralea corylifolia</i> L; it has the activity of antibiotic or anticancer.
Targets(IC50)	Antibacterial,Antibiotic,STAT

## Solubility Information

Solubility	DMSO: 130 mg/mL (405.82 mM),Sonication is recommended. (< 1 mg/ml refers to the product slightly soluble or insoluble)
In vivo Formulation	10% DMSO+90% Corn Oil: 2.5 mg/mL (7.8 mM),Sonication is recommended. <i>Please add the solvents sequentially, clarifying the solution as much as possible before adding the next one. Dissolve by heating and/or sonication if necessary. Working solution is recommended to be prepared and used immediately. The formulation provided above is for reference purposes only. In vivo formulations may vary and should be modified based on specific experimental conditions.</i>

## Preparing Stock Solutions

	1mg	5mg	10mg
1 mM	3.1217 mL	15.6084 mL	31.2168 mL
5 mM	0.6243 mL	3.1217 mL	6.2434 mL
10 mM	0.3122 mL	1.5608 mL	3.1217 mL
50 mM	0.0624 mL	0.3122 mL	0.6243 mL

Please select the appropriate solvent to prepare the stock solution, according to the solubility of the product in different solvents. Please use it as soon as possible.

Note: The dilution table applies only to solid products. For liquid products, please calculate the stock solution based on the stated concentration and/or density.

### Reference

Lee SW, et al. Phenolic compounds isolated from Psoralea corylifolia inhibit IL-6-induced STAT3 activation. *Planta Med.* 2012 Jun;78(9):903-6.

Shang H, Liu X, Pan J, et al. Exploring the mechanism and phytochemicals in Psoraleae Fructus-induced hepatotoxicity based on RNA-seq, in vitro screening and molecular docking. *Scientific Reports.* 2024, 14(1): 1696.

**Inhibitor · Natural Compounds · Compound Libraries · Recombinant Proteins**

This product is for Research Use Only · Not for Human or Veterinary or Therapeutic Use

Tel: 781-999-4286 E\_mail: info@targetmol.com Address: 34 Washington Street, Wellesley Hills, MA 02481