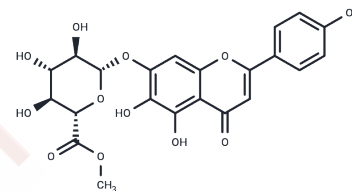


Scutellarin methyl ester

Chemical Properties

CAS No. :	119262-68-9
Formula:	C ₂₂ H ₂₀ O ₁₂
Molecular Weight:	476.39
Storage:	Powder: -20°C for 3 years In solvent: -80°C for 1 year Actual storage temperature shall be subject to the COA.



Biological Description

Description	Scutellarin methyl ester has the effect of improving sleep, such as prolonging sleep time, increasing the incidence of sleep, shortening sleep latency, which also helps to delay aging process.
Targets(IC50)	Others

Solubility Information

Solubility	Pyridine, Methanol, etc.: Soluble, DMSO: 70 mg/mL (146.94 mM),Sonication is recommended. Ethanol: Soluble, (< 1 mg/ml refers to the product slightly soluble or insoluble)
------------	---

Preparing Stock Solutions

	1mg	5mg	10mg
1 mM	2.0991 mL	10.4956 mL	20.9912 mL
5 mM	0.4198 mL	2.0991 mL	4.1982 mL
10 mM	0.2099 mL	1.0496 mL	2.0991 mL
50 mM	0.042 mL	0.2099 mL	0.4198 mL

Please select the appropriate solvent to prepare the stock solution, according to the solubility of the product in different solvents. Please use it as soon as possible.

Note: The dilution table applies only to solid products. For liquid products, please calculate the stock solution based on the stated concentration and/or density.

Inhibitor · Natural Compounds · Compound Libraries · Recombinant Proteins

This product is for Research Use Only · Not for Human or Veterinary or Therapeutic Use

Tel:781-999-4286 E_mail:info@targetmol.com Address:34 Washington Street,Wellesley Hills,MA 02481