

Gly-Phe-Arg acetate(121822-47-7 free base)

Chemical Properties

CAS No. :

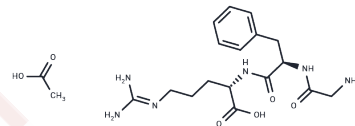
Formula: C19H30N6O6

Molecular Weight: 438.49

Keep away from moisture

Storage: Powder: -20°C for 3 years | In solvent: -80°C for 1 year

Actual storage temperature shall be subject to the COA.



Biological Description

Description	Gly-Phe-Arg acetate is a superpotent synthetic tripeptide mimics of the mud-crab pumping pheromone.
Targets(IC50)	Others
In vivo	Gly-Phe-Arg produces not only a statistically significant increase in the relative number of pumping mud crabs but also a substantial increase in the pumping rate ratio[1].

Solubility Information

Solubility	DMSO: 10 mM, Sonication is recommended. (< 1 mg/ml refers to the product slightly soluble or insoluble)
------------	------------------------------------------------------------------------------------------------------------

Preparing Stock Solutions

	1mg	5mg	10mg
1 mM	2.2806 mL	11.4028 mL	22.8055 mL
5 mM	0.4561 mL	2.2806 mL	4.5611 mL
10 mM	0.2281 mL	1.1403 mL	2.2806 mL
50 mM	0.0456 mL	0.2281 mL	0.4561 mL

Please select the appropriate solvent to prepare the stock solution, according to the solubility of the product in different solvents. Please use it as soon as possible.

Note: The dilution table applies only to solid products. For liquid products, please calculate the stock solution based on the stated concentration and/or density.

Reference

Pettis RJ, et al. Superpotent synthetic tripeptide mimics of the mud-crab pumping pheromone. Int J Pept Protein Res. 1993 Oct;42(4):312-9.

Inhibitor · Natural Compounds · Compound Libraries · Recombinant Proteins

This product is for Research Use Only · Not for Human or Veterinary or Therapeutic Use

Tel:781-999-4286 E_mail:info@targetmol.com Address:34 Washington Street,Wellesley Hills,MA 02481