

(S)-CCG-1423

## Chemical Properties

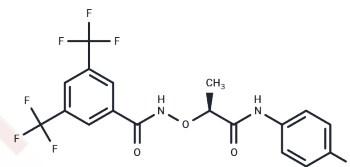
CAS No. :

Formula: C<sub>18</sub>H<sub>13</sub>ClF<sub>6</sub>N<sub>2</sub>O<sub>3</sub>

Molecular Weight: 454.8

Storage: Powder: -20°C for 3 years | In solvent: -80°C for 1 year

Actual storage temperature shall be subject to the COA.



## Biological Description

Description	(S)-CCG-1423 is a stereoisomer of CCG-1423. CCG-1423 is a Rho inhibitor involved in blocking signaling through myocardin-related transcription factor A and serum response factor.
Targets(IC50)	Others,Ras
In vitro	CCG-14223 was an inhibitor for Rho/SRF pathway and displayed activity in several in vitro cancer cell functional assays. In PC-3 prostate cancer cells, CCG-1423 (< 1 μmol/L) potently inhibited lysophosphatidic acid-induced DNA synthesis. CCG-1423 inhibited the growth of RhoC-overexpressing melanoma lines at nanomolar concentrations. CCG-1423 selectively stimulated apoptosis of the metastasis-prone, RhoC-overexpressing melanoma cell line when compared with the parental cell line. CCG-1423 inhibited Rho-dependent invasion by PC-3 prostate cancer cells. The S-isomer of CCG-1423 inhibited MRTF-A-dependent cellular events, including SRF-mediated gene expression and cell migration. The efficacy of (S)-CCG-1423 was more potent than the R-isomer [1][2].

## Solubility Information

Solubility	Ethanol: ≤0.25 mg/mL, Sonication is recommended. DMSO: 10 mg/mL (21.99 mM), Sonication is recommended. (< 1 mg/ml refers to the product slightly soluble or insoluble)
------------	--

### Preparing Stock Solutions

---

	<b>1mg</b>	<b>5mg</b>	<b>10mg</b>
1 mM	2.1988 mL	10.9938 mL	21.9877 mL
5 mM	0.4398 mL	2.1988 mL	4.3975 mL
10 mM	0.2199 mL	1.0994 mL	2.1988 mL
50 mM	0.044 mL	0.2199 mL	0.4398 mL

---

Please select the appropriate solvent to prepare the stock solution, according to the solubility of the product in different solvents. Please use it as soon as possible.

Note: The dilution table applies only to solid products. For liquid products, please calculate the stock solution based on the stated concentration and/or density.

**Inhibitor · Natural Compounds · Compound Libraries · Recombinant Proteins**

This product is for Research Use Only · Not for Human or Veterinary or Therapeutic Use

Tel:781-999-4286 E\_mail:info@targetmol.com Address:34 Washington Street,Wellesley Hills,MA 02481