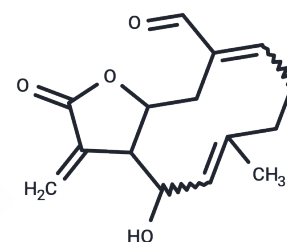


Schkuhriolide

Chemical Properties

CAS No. :	73675-60-2
Formula:	C ₁₅ H ₁₈ O ₄
Molecular Weight:	262.30
Storage:	Powder: -20°C for 3 years In solvent: -80°C for 1 year Actual storage temperature shall be subject to the COA.



Biological Description

Description	Schkuhriolide is a melampolide.
Targets(IC50)	Others

Preparing Stock Solutions

	1mg	5mg	10mg
1 mM	3.8124 mL	19.0621 mL	38.1243 mL
5 mM	0.7625 mL	3.8124 mL	7.6249 mL
10 mM	0.3812 mL	1.9062 mL	3.8124 mL
50 mM	0.0762 mL	0.3812 mL	0.7625 mL

Please select the appropriate solvent to prepare the stock solution, according to the solubility of the product in different solvents. Please use it as soon as possible.

Note: The dilution table applies only to solid products. For liquid products, please calculate the stock solution based on the stated concentration and/or density.

Reference

- Delgado G, Tejada V, Salas A, Chávez MI, Guzmán S, Bolaños A, Aguilar MI, Navarro V, Villarreal ML. New melampolides from *Schkuhria schkuhrioides*. *J Nat Prod*. 1998 Sep;61(9):1082-5. PubMed PMID: 9748370.
- Choi JG, Kang OH, Lee YS, Oh YC, Chae HS, Obiang-Obounou B, Park SC, Shin DW, Hwang BY, Kwon DY. Antimicrobial activity of the constituents of *Smallanthus sonchifolius* leaves against methicillin-resistant *Staphylococcus aureus*. *Eur Rev Med Pharmacol Sci*. 2010 Dec;14(12):1005-9. PubMed PMID: 21375130.
- Hong SS, Lee SA, Han XH, Lee MH, Hwang JS, Park JS, Oh KW, Han K, Lee MK, Lee H, Kim W, Lee D, Hwang BY. Melampolides from the leaves of *Smallanthus sonchifolius* and their inhibitory activity of lps-induced nitric oxide production. *Chem Pharm Bull (Tokyo)*. 2008 Feb;56(2):199-202. PubMed PMID: 18239309.
- Barquera-Lozada JE, Cuevas G. Are boat transition states likely to occur in Cope rearrangements? A DFT study of the biogenesis of germacrane. *Beilstein J Org Chem*. 2017 Sep 19;13:1969-1976. doi: 10.3762/bjoc.13.192. eCollection 2017. PubMed PMID: 29062416; PubMed Central PMCID: PMC5629395.

Inhibitor · Natural Compounds · Compound Libraries · Recombinant Proteins

This product is for Research Use Only · Not for Human or Veterinary or Therapeutic Use

Tel:781-999-4286 E_mail:info@targetmol.com Address:34 Washington Street,Wellesley Hills,MA 02481