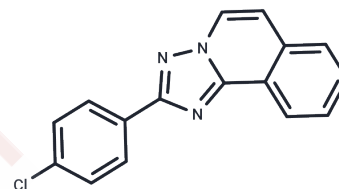


Lotrifen

Chemical Properties

CAS No. :	66535-86-2
Formula:	C ₁₆ H ₁₀ ClN ₃
Molecular Weight:	279.72
Storage:	Powder: -20°C for 3 years In solvent: -80°C for 1 year Actual storage temperature shall be subject to the COA.



Biological Description

Description	Lotrifen (Privaprol), an agent of non-hormonal antifertility, causes the arrest and involution of pregnancy. It acts, after the implantation of the blastocyst, directly on the product of conception, which undergoes a slow and gradual degenerative process and ends with the reabsorption or expulsion of it.
Targets(IC50)	Others

Solubility Information

Solubility	DMSO: Slightly soluble (< 1 mg/ml refers to the product slightly soluble or insoluble)
------------	-------------------------------------------------------------------------------------------

Preparing Stock Solutions

	1mg	5mg	10mg
1 mM	3.575 mL	17.875 mL	35.750 mL
5 mM	0.715 mL	3.575 mL	7.150 mL
10 mM	0.3575 mL	1.7875 mL	3.575 mL
50 mM	0.0715 mL	0.3575 mL	0.715 mL

Please select the appropriate solvent to prepare the stock solution, according to the solubility of the product in different solvents. Please use it as soon as possible.

Note: The dilution table applies only to solid products. For liquid products, please calculate the stock solution based on the stated concentration and/or density.

Reference

Wanke R, Hermanns W. Adverse effects of the antifertility agent DL 717-IT (Canocenta, Byk Gulden, FRG). Pathological findings in the rabbit. *Res Commun Chem Pathol Pharmacol*. 1989 Jan;63(1):69-80.

Lerner LJ. Development of novel embryotoxic compounds for interceptive fertility control in the dog. *J Reprod Fertil Suppl*. 1989;39:251-65.

Kälin S, et al. [Sterile, purulent meningitis and generalized vasculitis caused by a new drug for prevention of nidation in the dog]. *Schweiz Arch Tierheilkd*. 1987 Jul;129(7):335-42. German.

Inhibitor · Natural Compounds · Compound Libraries · Recombinant Proteins

This product is for Research Use Only · Not for Human or Veterinary or Therapeutic Use

Tel:781-999-4286 E_mail:info@targetmol.com Address:34 Washington Street,Wellesley Hills,MA 02481