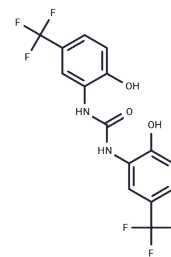


NS1643

Chemical Properties

CAS No. : 448895-37-2
 Formula: C₁₅H₁₀F₆N₂O₃
 Molecular Weight: 380.24
 Storage: Powder: -20°C for 3 years | In solvent: -80°C for 1 year
 Actual storage temperature shall be subject to the COA.



Biological Description

Description	NS1643 is a potent human ether-a-go-go related gene (hERG) KV11.1 channel activator with EC ₅₀ of 10.5 μM.
Targets(IC ₅₀)	Autophagy,Potassium Channel

Solubility Information

Solubility	DMSO: 50 mg/mL (131.5 mM),Sonication is recommended. Ethanol: 100 mM,Sonication is recommended. (< 1 mg/ml refers to the product slightly soluble or insoluble)
In vivo Formulation	10% DMSO+40% PEG300+5% Tween 80+45% Saline: 2 mg/mL (5.26 mM),Sonication is recommended. <i>Please add the solvents sequentially, clarifying the solution as much as possible before adding the next one. Dissolve by heating and/or sonication if necessary. Working solution is recommended to be prepared and used immediately. The formulation provided above is for reference purposes only. In vivo formulations may vary and should be modified based on specific experimental conditions.</i>

Preparing Stock Solutions

	1mg	5mg	10mg
1 mM	2.6299 mL	13.1496 mL	26.2992 mL
5 mM	0.526 mL	2.6299 mL	5.2598 mL
10 mM	0.263 mL	1.315 mL	2.6299 mL
50 mM	0.0526 mL	0.263 mL	0.526 mL

Please select the appropriate solvent to prepare the stock solution, according to the solubility of the product in different solvents. Please use it as soon as possible.

Note: The dilution table applies only to solid products. For liquid products, please calculate the stock solution based on the stated concentration and/or density.

Reference

Casis O, et al. Mol Pharmacol. 2006 Feb;69(2):658-65.

Inhibitor · Natural Compounds · Compound Libraries · Recombinant Proteins

This product is for Research Use Only · Not for Human or Veterinary or Therapeutic Use

Tel:781-999-4286 E_mail:info@targetmol.com Address:34 Washington Street,Wellesley Hills,MA 02481