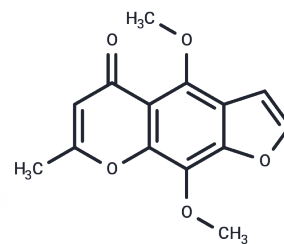


Khellin

Chemical Properties

CAS No. :	82-02-0
Formula:	C ₁₄ H ₁₂ O ₅
Molecular Weight:	260.24
Storage:	Powder: -20°C for 3 years In solvent: -80°C for 1 year Actual storage temperature shall be subject to the COA.



Biological Description

Description	Khellin (Methafrone) is a vasodilator that also has bronchodilatory action.
Targets(IC50)	EGFR

Solubility Information

Solubility	DMSO: 12 mg/mL (46.11 mM), Sonication is recommended. (< 1 mg/ml refers to the product slightly soluble or insoluble)
------------	--

Preparing Stock Solutions

	1mg	5mg	10mg
1 mM	3.8426 mL	19.213 mL	38.4261 mL
5 mM	0.7685 mL	3.8426 mL	7.6852 mL
10 mM	0.3843 mL	1.9213 mL	3.8426 mL
50 mM	0.0769 mL	0.3843 mL	0.7685 mL

Please select the appropriate solvent to prepare the stock solution, according to the solubility of the product in different solvents. Please use it as soon as possible.

Note: The dilution table applies only to solid products. For liquid products, please calculate the stock solution based on the stated concentration and/or density.

Reference

Vrzal R, et al. PLoS One. 2013 Sep 19;8(9):e74917.

Ouyang X, Zhu D, Huang Y, et al. Khellin as a selective monoamine oxidase B inhibitor ameliorated paclitaxel-induced peripheral neuropathy in mice. Phytomedicine. 2023: 154673.

Inhibitor · Natural Compounds · Compound Libraries · Recombinant Proteins

This product is for Research Use Only · Not for Human or Veterinary or Therapeutic Use

Tel:781-999-4286 E_mail:info@targetmol.com Address:34 Washington Street,Wellesley Hills,MA 02481