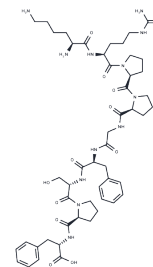


Lys-[Des-Arg9]Bradykinin

Chemical Properties

CAS No. :	71800-36-7
Formula:	C50H73N13O11
Molecular Weight:	1032.21
Storage:	Keep away from moisture Powder: -20°C for 3 years In solvent: -80°C for 1 year <small>Actual storage temperature shall be subject to the COA.</small>



Biological Description

Description	Endogenous potent and highly selective bradykinin B1 receptor agonist (Ki values are 0.12 and > 30000 nM at human B1 and B2 receptors respectively). Hypotensive agent that reduces peripheral vascular resistance in vivo. 16-fold more potent than [Des-Arg9]-Bradykinin.
Targets(IC50)	Bradykinin Receptor

Solubility Information

Solubility	H2O: 1 mg/mL (0.97 mM), Sonication is recommended. (< 1 mg/ml refers to the product slightly soluble or insoluble)
------------	---

Preparing Stock Solutions

	1mg	5mg	10mg
1 mM	0.9688 mL	4.844 mL	9.688 mL
5 mM	0.1938 mL	0.9688 mL	1.9376 mL
10 mM	0.0969 mL	0.4844 mL	0.9688 mL
50 mM	0.0194 mL	0.0969 mL	0.1938 mL

Please select the appropriate solvent to prepare the stock solution, according to the solubility of the product in different solvents. Please use it as soon as possible.

Note: The dilution table applies only to solid products. For liquid products, please calculate the stock solution based on the stated concentration and/or density.

Reference

Drapeau et al (1991) Hypotensive effects of Lys-des-Arg9-Bradykinin and metabolically protected agonists of B1 receptors for kinins. J.Pharmacol.Exp.Ther. 259 997 PMID:

Regoli et al (2001) Classification of kinin receptors. Biol.Chem. 382 31 PMID:

Leeb-Lundberg et al (2005) International union of pharmacology. LV. Classification of the kinin receptor family: from molecular mechanisms to pathophysiological consequences. Pharmacol.Rev. 57 27 PMID:

Inhibitor · Natural Compounds · Compound Libraries · Recombinant Proteins

This product is for Research Use Only· Not for Human or Veterinary or Therapeutic Use

Tel:781-999-4286 E_mail:info@targetmol.com Address:34 Washington Street,Wellesley Hills,MA 02481