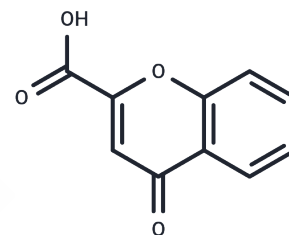


## Chromocarb

## Chemical Properties

CAS No. :	4940-39-0
Formula:	C <sub>10</sub> H <sub>6</sub> O <sub>4</sub>
Molecular Weight:	190.15
Storage:	Powder: -20°C for 3 years   In solvent: -80°C for 1 year Actual storage temperature shall be subject to the COA.



## Biological Description

Description	Chromocarb (Chromone-2-carboxylic acid) is a vascular protective agent used to treat venous disorders and microvascular affections.
Targets(IC50)	Others
In vitro	Rats treated orally with Chromocarb exhibited a significant reduction in vascular wall degradation induced by intravenous collagenase. Chromocarb treatment led to a decreased increase in BBB (blood-brain barrier) permeability, accelerated recovery, lower hydroxyproline levels in cerebrospinal fluid, and a lesser decline in collagen content within the cerebral capillary basement membranes. Furthermore, at a dose of 50 mg/kg, Chromocarb was more effective than vitamin C at preventing the oxidation of reduced glutathione in the blood.

## Solubility Information

Solubility	H <sub>2</sub> O: < 1 mg/mL (insoluble or slightly soluble), DMSO: 50 mg/mL (262.95 mM),Sonication is recommended. Ethanol: < 1 mg/mL (insoluble or slightly soluble), (< 1 mg/ml refers to the product slightly soluble or insoluble)
In vivo Formulation	10% DMSO+40% PEG300+5% Tween 80+45% Saline: 2 mg/mL (10.52 mM),Sonication is recommended. <i>Please add the solvents sequentially, clarifying the solution as much as possible before adding the next one. Dissolve by heating and/or sonication if necessary. Working solution is recommended to be prepared and used immediately. The formulation provided above is for reference purposes only. In vivo formulations may vary and should be modified based on specific experimental conditions.</i>

### Preparing Stock Solutions

---

	<b>1mg</b>	<b>5mg</b>	<b>10mg</b>
1 mM	5.259 mL	26.295 mL	52.5901 mL
5 mM	1.0518 mL	5.259 mL	10.518 mL
10 mM	0.5259 mL	2.6295 mL	5.259 mL
50 mM	0.1052 mL	0.5259 mL	1.0518 mL

---

Please select the appropriate solvent to prepare the stock solution, according to the solubility of the product in different solvents. Please use it as soon as possible.

Note: The dilution table applies only to solid products. For liquid products, please calculate the stock solution based on the stated concentration and/or density.

#### Reference

Godeau G, et al. Clin Physiol Biochem, 1987, 5(1), 15-26.

Márquez R, et al. Pharmacol Toxicol, 2001, 89(5), 255-258

**Inhibitor · Natural Compounds · Compound Libraries · Recombinant Proteins**

This product is for Research Use Only · Not for Human or Veterinary or Therapeutic Use

Tel:781-999-4286 E\_mail:info@targetmol.com Address:34 Washington Street,Wellesley Hills,MA 02481