

PSI

Chemical Properties

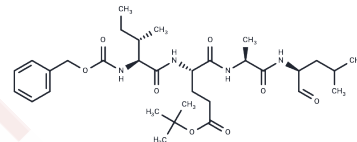
CAS No. : 158442-41-2

Formula: C₃₂H₅₀N₄O₈

Molecular Weight: 618.76

Storage: Keep away from moisture, Store at low temperature
 Powder: -20°C for 3 years | In solvent: -80°C for 1 year

Actual storage temperature shall be subject to the COA.



Biological Description

Description	PSI is a proteasome inhibitor.
Targets(IC50)	Proteasome

Solubility Information

Solubility	H ₂ O: insoluble DMSO: 30 mg/mL (48.48 mM), Sonication is recommended. Ethanol: 48 mg/mL (77.57 mM), Sonication is recommended. (< 1 mg/ml refers to the product slightly soluble or insoluble)
------------	---

Preparing Stock Solutions

	1mg	5mg	10mg
1 mM	1.6161 mL	8.0807 mL	16.1614 mL
5 mM	0.3232 mL	1.6161 mL	3.2323 mL
10 mM	0.1616 mL	0.8081 mL	1.6161 mL
50 mM	0.0323 mL	0.1616 mL	0.3232 mL

Please select the appropriate solvent to prepare the stock solution, according to the solubility of the product in different solvents. Please use it as soon as possible.

Note: The dilution table applies only to solid products. For liquid products, please calculate the stock solution based on the stated concentration and/or density.

Reference

Tanaka K . Molecular biology of proteasomes[J]. Molecular Biology Reports, 1995, 21(9):21-26.

Inhibitor · Natural Compounds · Compound Libraries · Recombinant Proteins

This product is for Research Use Only · Not for Human or Veterinary or Therapeutic Use

Tel:781-999-4286 E_mail:info@targetmol.com Address:34 Washington Street,Wellesley Hills,MA 02481